



FORWARD >>



NKF Annual Report 2021/22
1 July 2021 - 30 June 2022

>> Engine 1

Taking treatment to full potential

Making PD and other modalities viable alternatives

Holistic Care for Dialysis Patients

Supporting Clinical Research & Medtech

With the

2
engines
that fly us

>> Engine 2

Reducing progression of chronic kidney disease

Driving innovation in renal care

Improving quality and efficacy of renal care

Contents >>



06
Soaring together
for a better future
Message from our
Chairman & CEO

08
Broadening
our horizons
for endemic
Covid-19 living

Engine 1

10

Taking
treatment
to full
potential

12
Haemodialysis &
portable funding,
children's
dialysis

17
Peritoneal
dialysis and other
modalities as
viable alternatives

24
Holistic care for
dialysis patients

29
Supporting
clinical research
& medtech

Engine 2

30

Reducing
progression of
chronic kidney
disease

36
Driving
innovation in
renal care

37
Improving quality
and efficacy of
renal care

38
Scaling greater
heights with your
strong support

42
Corporate
governance

50
Financial
statements

52
Our
compassionate
donors and
volunteers

58
Our
dialysis centres
islandwide for
convenience
and easy
access

Soaring together for a better future



“ Engine 1 is in the short term – what we want to continue doing in NKF but doing it better and doing it a lot more efficiently. But we cannot just rely on Engine 1. We need to focus on Engine 2, which is the medium- to long-term strategy to arrest the disturbing trend of kidney disease through upstream education and prevention. ”

Message from our Chairman & CEO

Overcoming the Covid-19 pandemic has posed a colossal challenge for everyone. At NKF, with dialysis patients at greater risk due to their weaker immune systems, our 1,000-strong team has spared no effort in ensuring that they continue to receive uninterrupted and safe dialysis treatments and care. Since the start of the pandemic in early 2020, we ensured delivery of around 1.5 million life-saving dialysis treatments for well over two years. We pay tribute to all staff for their selfless sacrifices, dedication and commitment during this tumultuous time. While we are deeply saddened to have lost some along the way, we have emerged stronger and more resilient to better serve dialysis patients in future crises. We are also immensely grateful to you for standing by us and with us. Your care and contributions have gone a long way in ensuring our dialysis patients' safety and well-being.

With kidney failure cases rising at an alarming pace in Singapore, we see a “kidney tsunami” coming. About six people are diagnosed every day, a three-fold increase from two decades ago. More than 300,000 people suffer from chronic kidney disease, with possibly more due to undiagnosed cases. NKF has over 5,300 dialysis patients – about 60% of the total dialysis patient population in Singapore. Diabetes remains one of the leading causes of kidney failure, and Singapore has one of the highest diabetes prevalence worldwide. If diabetes and other chronic diseases are not kept under control, daily kidney failure cases could hit 20, or even 30 cases in a few decades.

To shape the longer-term plans of NKF, the Board and Management came together to envision the future of NKF. Our vision, **Future Forward 2030**, encompasses a two-engine strategy – like any aeroplane, it performs better when it has two engines. One is in the short-

term – what we want to continue doing in NKF but doing it better and doing it a lot more efficiently. We want patients to take ownership of their health and we strive to empower them to take charge of their health through self-care. We have to make sure that our patients are open to having dialysis treatment not only in the dialysis centres, but also at home. We need to train them and make sure our medical staff are well trained. We need to focus on the mental well-being of not only patients, but also their family members.

To ensure better integrated care, we have set up a dialysis centre, situated within a community hospital. Our new dialysis centre, located at Yishun Community Hospital and adjacent to Khoo Teck Puat Hospital, is the first of its kind that comes with a peritoneal dialysis (PD) clinic. It offers a unique shared care model that provides fully integrated and seamless dialysis care for both haemodialysis (HD) and PD patients. The partnership with hospitals also ensures that our patients enjoy continuity of care through connected networks of healthcare teams, information flow and treatment care plans. Our PD shared care model, which is offered at the PD clinic in the dialysis centre, better supports patients who choose PD as their preferred modality of treatment. This includes sharing of patient care between NKF and the hospital nephrologists, patient and caregiver education, and respite care.

We have to make sure that we have a cost structure that is sustainable to continue what we are doing and, at the same time, be responsible to all our stakeholders and for your donations. That is Engine 1.

But we cannot just rely on Engine 1. We need to focus on Engine 2, which is the medium- to long-

term strategy for NKF to arrest the disturbing trend of kidney disease. We need to focus on upstream education and prevention – working with the community at large, schools and our partners in the healthcare ecosystem, to help people understand the importance of a healthy lifestyle. Our community outreach strategy is centred on the young, families and seniors, as well as the high-risk groups, to prevent the disease from happening in the first place. Other than raising Singaporeans' awareness of kidney health through a diversity of public education activities, we have also started to focus on facilitating the partnerships between different care providers and community partners, so as to better integrate primary care and specialised renal care. The CKD (Chronic Kidney Disease) Intervention Programme that NKF initiated is in line with the Healthier SG strategy that the nation will be implementing gradually. Not only does the programme help at-risk groups detect any signs of disease early and take prompt actions through a kidney health screening, it also facilitates effective referrals and follow-up care through building partnerships with various clinics. With greater targeted intervention, it will be more effective and timely in ensuring that Singaporeans can detect early warning signs of kidney disease.

We also need to focus on innovation in treating kidney disease to better serve our patients, and do it in a very cost-efficient way. We can do this because we have the data, information and background of patients to work together with the community at large. Crucially, we need to continue practising good corporate governance. In this regard, we are honoured to have

received the Charity Governance Award and Charity Transparency Award 2022, which is an endorsement of our efforts in these areas to put us in good stead towards achieving our shared vision for 2030.

With these goals in mind, our expenses are expected to rise in the coming years as we continue to serve and do more. Therefore, we will press on with our fundraising efforts with your support, in a responsible way. We want to keep costs to a minimum while still ensuring that we provide the best care to our patients.

It takes a whole-of-society approach to address this “kidney tsunami” problem, and we need your collaborative partnership to sustain our holistic kidney care programme and enhance our preventive efforts to help build a healthy, caring and resilient society.

Thank you, once again, for believing in NKF and what we do, and for your continued and unwavering support.

Arthur Lang
Chairman

Tim Oei
Chief Executive Officer

Broadening our horizons for endemic Covid-19 living



During the Covid-19 pandemic, NKF spared no effort in ensuring kidney failure patients continued to receive safe and crucial life-saving dialysis treatment and care in an uninterrupted way. Since early 2020, the whole 1,000-strong NKF team worked tirelessly and steadfastly over a period of well over two years and delivered around 1.5 million dialysis treatments. We are grateful to all our supporters who stood by us during these challenging times to serve our patients well and for continuing to journey with us as we move towards endemic Covid-19.

Serving as a National Dialysis Centre to Care for All Dialysis Patients

While we remained agile in providing uninterrupted dialysis treatment to our patients at all our dialysis centres, we continued to stretch ourselves to support Covid-19 dialysis patients from different dialysis providers. When there was a shortage of slots in the national dialysis centres, NKF staff turned things around quickly to treat patients in their original dialysis centres and even responded selflessly to the call to serve on their non-working Sundays and operate special dialysis shifts, so that no Covid-19 dialysis patient was left out.

Over 2,800
dialysis treatments
carried out to support
Covid-19 dialysis
patients nationally



During the peak of Covid Omicron variant in February 2022, with 20,000 to 30,000 infected cases daily in the community, a total of 712 NKF dialysis patients were infected with the virus. NKF's designated national dialysis centre worked tirelessly to deliver 950 dialysis treatments within 28 days.

Safeguarding Patients with Stringent Safety Measures

We continued to calibrate our safety measures in accordance with the Ministry of Health's guidelines to ensure that our infection control measures remained at the highest standard, and that we were quick to adjust to the necessary changes to processes, procedures and the work environment to ensure continuity of care for our patients.

Ensuring Continuity of Patients' Care Needs through Telecare and Telemedicine

We continued to reach out to patients through telemedicine and telecare as and when needed, while we progressively resumed with face-to-face care and consultation so that patients' care needs are not disrupted. NKF's team of doctors, nurses and allied health professionals continued to journey with patients by adopting this hybrid approach in providing all-round quality care to meet patients' medical, nutritional and psychosocial needs in these extraordinary times.

"At the time when the Covid-19 situation was constantly evolving, as an infection control nurse, we were always on high alert to get the situation under control and plan for worst-case scenarios, so as to minimise infection risk to patients and staff within the dialysis centres."

Ms Faezah Binte Mohamad Adam, Nurse

"You cannot control what life throws at you, good or bad. But you can control your attitude towards what happens to you. Meditation, my family and peer support are my guiding light, helping me to stop worrying about things I cannot control."

Mr Shashitharen Ambalaka, who has been practising mindfulness meditation on a daily basis after his stroke attack, which helps to clear his mind. In the absence of the regular physical interaction brought about by the Covid-19 situation, we reached out to patients who may be at risk of social isolation and loneliness, and kept them engaged for their physical and mental well-being by initiating a Mindfulness Meditation Support Group.

"Every day was a challenge. I have had to plan, coordinate and make sure that my team and I were able to deliver vital medical supplies to the dialysis centres."

Mr Nor Azhar Othman, who is part of the logistics team

1.5 million
Total number of life-saving dialysis treatments delivered over a period of well over two years during the pandemic

46%
Almost half of our patients, 2,012 of them, had been infected with the virus, and we were saddened to lose 57 lives despite our all-out efforts to safeguard them

\$500,000
To tide patients and family members through difficult economic times of the pandemic, about half a million dollars worth of food vouchers were provided

303
Total number of volunteers mobilised at dialysis centres islandwide to assist with in-centre duties and render care. We are deeply grateful for their compassion and dedication.



Taking treatment to full potential

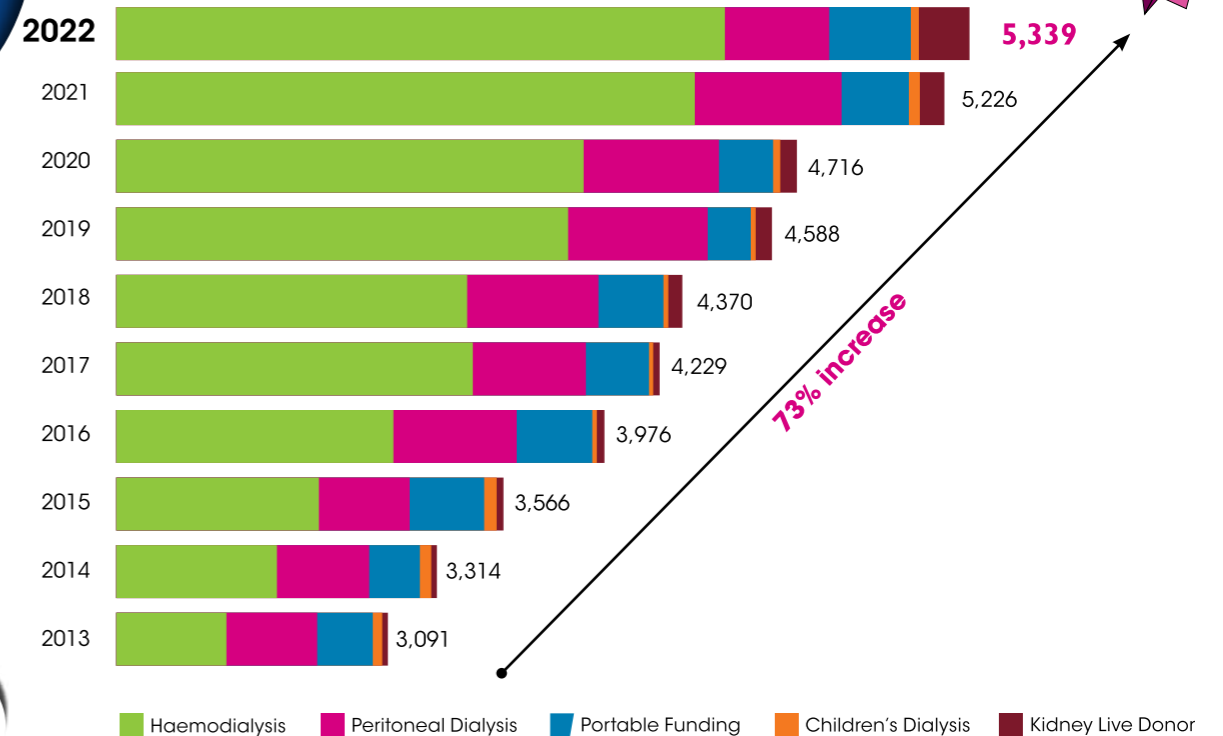
While we continue to work tirelessly to provide sustainable treatment to kidney patients under our care, we doggedly strive to take treatment to its full potential and drive greater impact with our existing core functions. These functions include: empowering and enabling our dialysis patients and their families to lead lives with better quality; constantly reviewing our processes and operational efficiency to ensure we have enough manpower and resources to run our dialysis centres; and enhancing our integrated care to better meet the diverse needs of patients

Our network of 40 purpose-built dialysis centres islandwide, Children's Kidney Centre at the National University Hospital (NUH) and portable funding scheme support patients who choose haemodialysis (HD), which is done at the community-based centres. For patients who opt for Peritoneal Dialysis (PD), our PD Community Support Programme enables them to carry out the treatment by themselves at home. NKF's Kidney Live Donor Support Programme supports patients and kidney donors for kidney transplant, which will help to turn patients' lives around.

A total of 5,339 patients and beneficiaries – up by 113 compared to the last financial year – benefitted from our various dialysis services. The total cost of providing dialysis, medication and auxiliary services amounted to \$137.4 million, a 14% increase.

Of the \$9.6 million in patient welfare subsidies, \$8.3 million went towards transport subsidies for bus, train, taxi, ambulance, van and dialysis escort assistance expenses for needy patients who require special transport services to and from dialysis centres.

Rising Trend of NKF's Kidney Patient and Beneficiary Population



Total Programme Cost to Support Patients and Beneficiaries

Programmes	Total Number of Patients and Beneficiaries			Programme Costs (\$'000)		
	As at 30 Jun 2022	As at 30 Jun 2021	Variance (%)	Year ended 30 Jun 2022	Year ended 30 Jun 2021	Variance (%)
Haemodialysis	4,406	4,302	2%	120,652	107,792	12%
Peritoneal Dialysis	516	593	-13%	1,507	1,210	25%
Portable Funding	309	246	26%	3,864	2,756	40%
Children's Dialysis (including funding to Children's Kidney Centre)	9	11	-18%	1,707	943	81%
Kidney Live Donor	99	74	34%	100	90	10%
				127,830	112,791	13%
Patient Welfare				9,569	7,438	29%
Total	5,339	5,226	2%	137,399	120,229	14%



Achieving Excellent Clinical Outcomes in Haemodialysis

99%

patients achieved desired outcome of $Kt/V \geq 1.2$. Fractional clearance of urea (Kt/V) is one key indicator for measuring dialysis adequacy

94%

patient survival rate in the first year

93%

patients achieved Hb level of ≥ 10 gm/dl. Improving patients' haemoglobin level results in better physical tolerance and quality of life

Caring for Haemodialysis Patients

We provide affordable, quality in-centre dialysis to kidney failure patients at our 40 community-based dialysis centres located islandwide, and they are cared for by 754 dedicated medical and allied health professionals and support staff, who provide them with quality treatment and care. A total of \$120.7 million was spent on treatment and all-round care for the financial year.

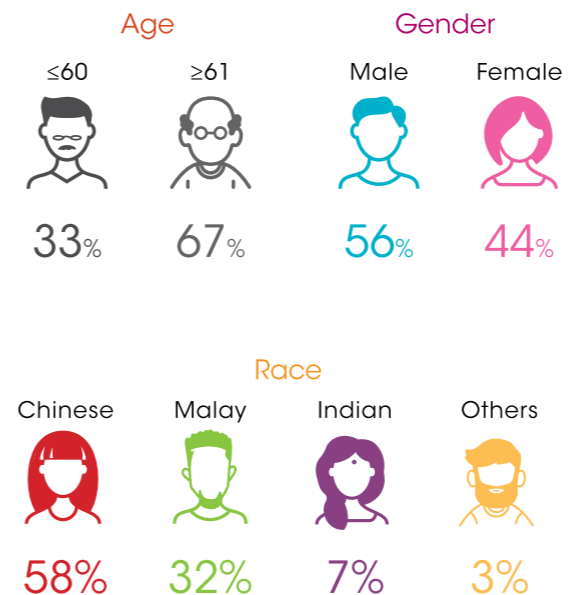
Striving for Quality Outcomes with Haemodiafiltration

In our relentless pursuit for better patient outcomes, NKF provides another form of dialysis called haemodiafiltration (HDF). Studies show that HDF, a process similar to HD, can reduce cardiovascular (heart disease) mortality, has better stability of blood pressure during dialysis and reduces some of the long-term complications due to dialysis. We equipped another six more dialysis centres with HDF machines, up from two previously. Altogether, there are 16 HDF machines to benefit patients.

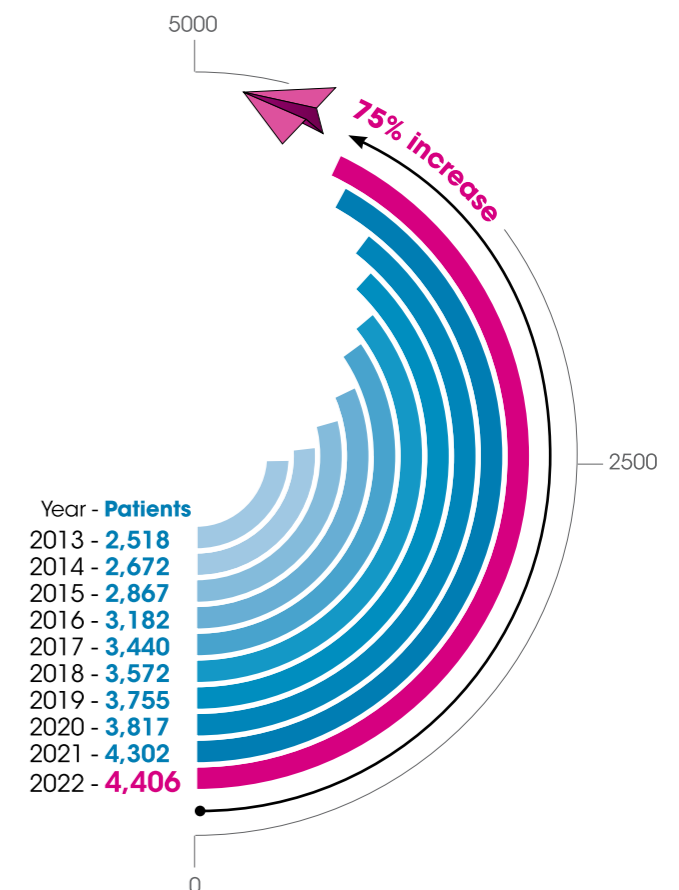
Improving the Lives of Patients on Nocturnal Dialysis

Unlike regular four-hour dialysis sessions during the day, nocturnal dialysis takes place at night while the patient sleeps and typically lasts for seven to eight hours a session. As dialysis hours are longer, this results in better health outcomes for patients.

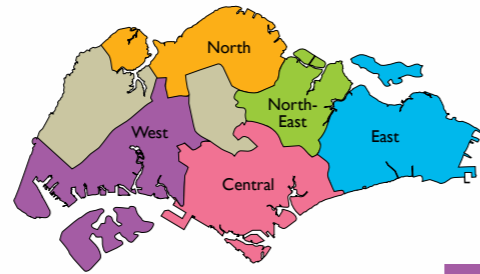
Profile of Haemodialysis Patients



Rising Trend of Haemodialysis Patients



40 dialysis centres ensuring accessibility & availability



North

- 204 Marsiling
- 365 Woodlands
- 761 Woodlands
- 825 Woodlands
- 203 Yishun
- 639 Yishun
- 840 Yishun
- Yishun Community Hospital

North-East

- 565 Ang Mo Kio
- 633 Ang Mo Kio
- 114 Hougang
- 628 Hougang
- Punggol Oasis Terraces
- 201 Serangoon

East

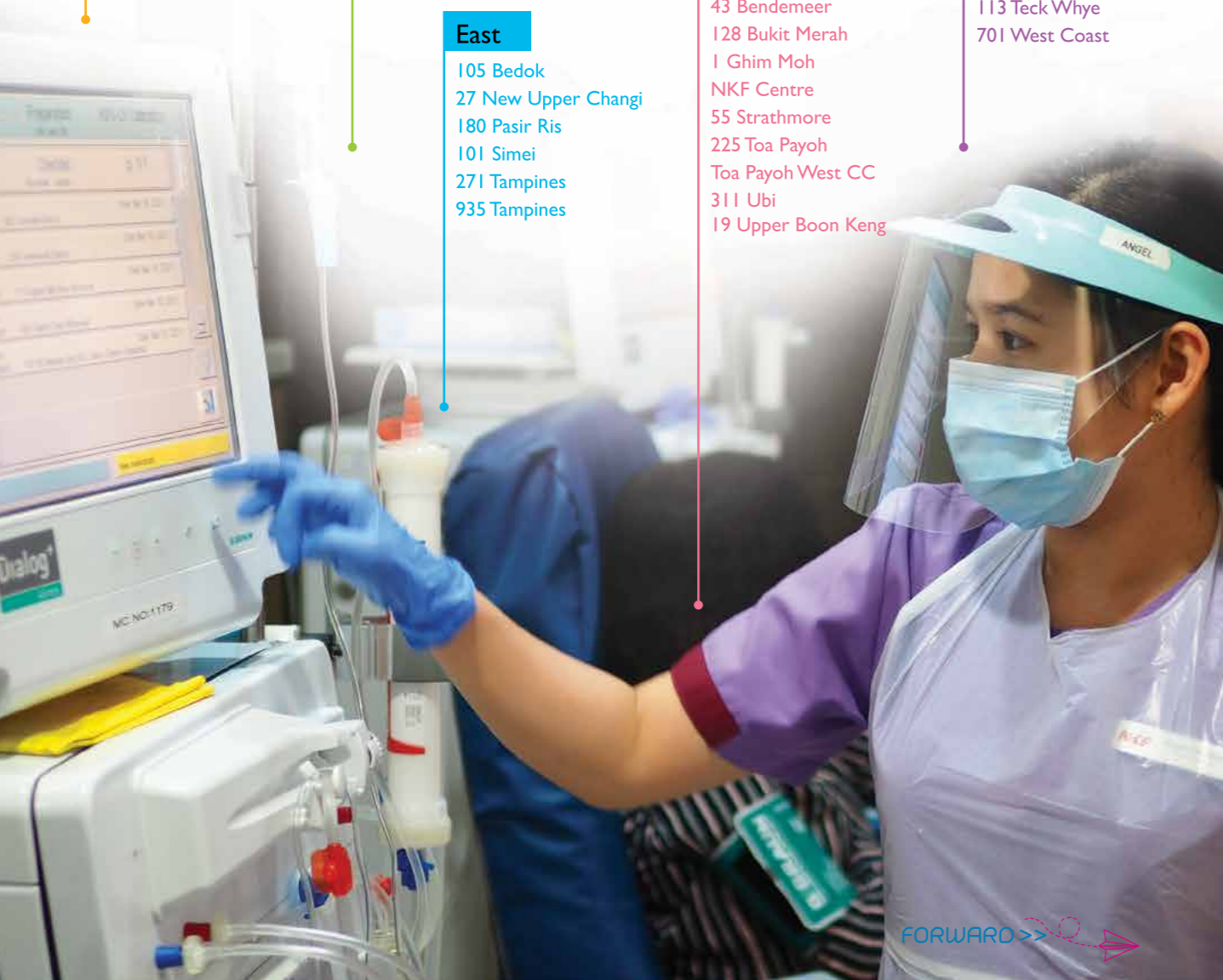
- 105 Bedok
- 27 New Upper Changi
- 180 Pasir Ris
- 101 Simei
- 271 Tampines
- 935 Tampines

Central

- 102 Aljunied
- 43 Bendemeer
- 128 Bukit Merah
- 1 Ghim Moh
- NKF Centre
- 55 Strathmore
- 225 Toa Payoh
- Toa Payoh West CC
- 311 Ubi
- 19 Upper Boon Keng

West

- 274 Bangkit
- 275 Bangkit
- 103 Bukit Batok
- 326 Clementi
- IRC Level 1 & 2
- 240C Jurong East
- 744 Jurong West
- 940 Jurong West
- 113 Teck Whye
- 701 West Coast



Our Strategy for Capacity Building

While doing our upstream work to prevent individuals from having kidney disease and delay progression of kidney disease, NKF works closely with the Ministry of Health and community partners to increase capacity to meet the growing demand for dialysis. NKF builds new dialysis centres in strategic locations with the goal of ensuring that no needy kidney patient is deprived of affordable dialysis. In addition, NKF increases capacity in a cost-efficient manner by adding more dialysis stations through enhanced space design of existing dialysis centres that undergo retrofitting as part of the cyclical maintenance to upkeep patient safety. Being in the heartlands, we are able to engage residents through outreach initiatives for better kidney health.

878

total number of dialysis stations

5,268

patient capacity

\$2.3 million

to upgrade and replace medical instruments and equipment

Co-location with Community Hospital for Integrated and Seamless Continuity of Care

NKF envisages the need to continue providing haemodialysis centres, in view of the current demand for places in the community. These haemodialysis centres can be better synergised with other healthcare institutions. Through the close and collaborative partnership between Yishun Community Hospital (YCH), Khoo Teck Puat Hospital (KTPH) and NKF, the dialysis centre we established at YCH is the first to offer integrated and seamless dialysis care for both haemodialysis and peritoneal dialysis patients under one roof. This helps to better manage patients' diverse needs through connected networks of healthcare teams, information flow and treatment care plans, with the aim of enhancing the quality of patients' lives.

Our New Dialysis Centre

NKF Dialysis Centre Supported by Man Fatt Lam Buddhist Temple @ 105 Bedok North

- Started operations in November 2021
- Made possible with a generous \$1 million contribution from Man Fatt Lam Buddhist Temple and its kind help to raise another \$1 million for the centre's building and operation costs
- Equipped with 16 dialysis stations serving up to 96 patients



Our Dialysis Centre with Expanded Capacity

NKF Dialysis Centre Supported by San Wang Wu Ti Religious Society @ 27 New Upper Changi

- Expanded patient capacity by 32% from 19 to 25 dialysis stations, serving up to 150 patients
- Made possible with a generous \$2 million donation from San Wang Wu Ti Religious Society towards the retrofit cost



Portable Funding Helps Patients in Private Dialysis Centres

Patients who pass the means test but cannot be admitted to NKF's haemodialysis programme – due to their multiple medical complications – are provided with subsidies to receive treatment at private dialysis centres through our Portable Funding. We also provide subsidies for patients dialysing at private dialysis centres while they wait for a suitable dialysis slot to be available at NKF through our Enhanced Portable Funding.

\$3.9 million

subsidies given out

309

beneficiaries



Making Peritoneal Dialysis and Other Modalities Viable Alternatives

NKF's PD Community Support Programme provides home-based holistic support to help PD patients manage their treatment well at home. Nurses make regular home visits to help patients prepare and adapt to PD, ensure a PD-safe environment, as well as provide continuous support whenever they have issues coping with PD at home. A total of 387 home visits were made to support patients on PD.

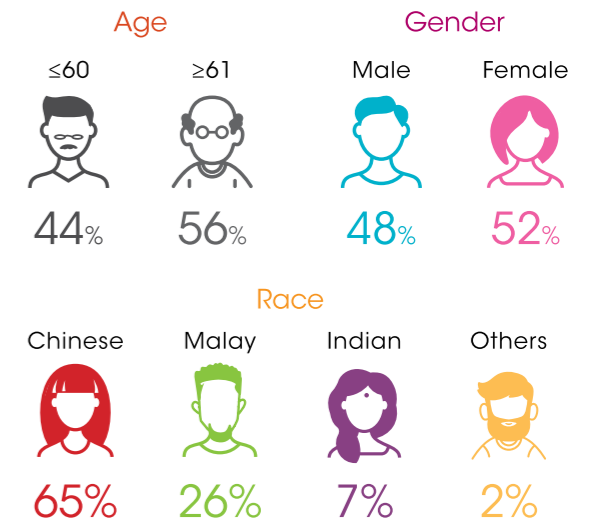
Unique PD Shared Care Model Gains Momentum

A shared care model offered at the NKF PD clinic – which we piloted in partnership with Khoo Teck Puat Hospital and Yishun Community Hospital – continues to gain momentum to better support patients who choose PD as their preferred modality of treatment. PD services provided include post-PD catheter insertion flushing, PD training, initiation and maintenance home visits, investigation to check on dialysis adequacy and peritoneum membrane characteristic, medication administration and exit site care. Both hospital and NKF-based nephrologists, nurses, social workers, dietitians and allied healthcare professionals ensure patients' holistic care. The model also allows for more seamless flow of medical information through an integrated electronic system and shared responsibility for quality control. The PD clinic can serve up to 30 PD patients a month. About 145 patients – through a total of around 480 visits – have benefitted from the clinic's services since it started operations in December 2020.

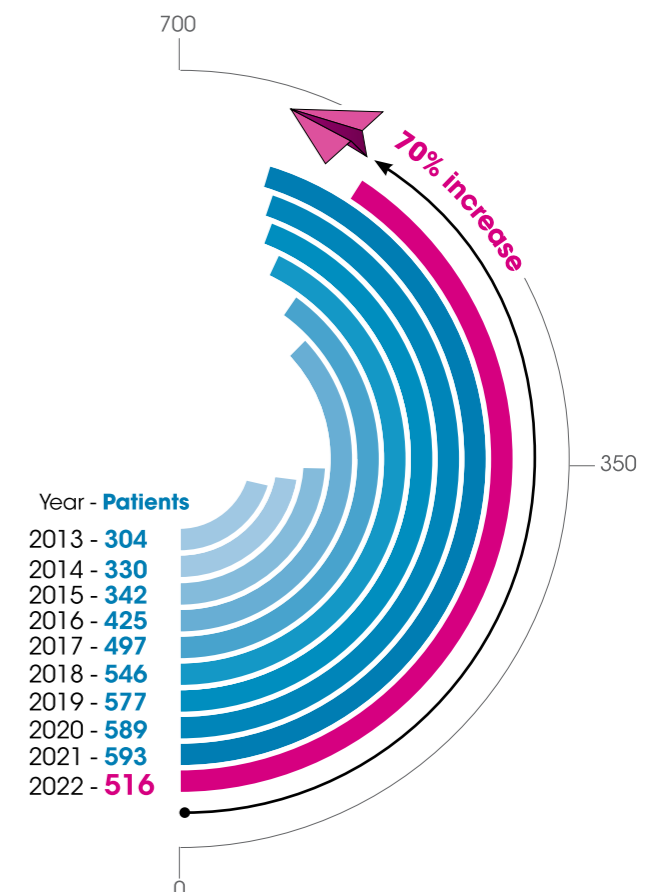
PD Support Group

Since its establishment, the PD Support Group has helped equip patients with better health literacy, alleviate psychosocial issues, and enable community bonding amongst patients and staff. Naming themselves as "PD Warriors", the group leaders produced videos and engaged the hospitals for presentations. With this collaboration, they aim to reach out to more patients, especially the pre-dialysis patients. The group mainly meets online due to Covid-19 restrictions. 67 patients have benefitted from the PD Support Group.

Profile of Peritoneal Dialysis Beneficiaries



Rising Trend of Peritoneal Dialysis Beneficiaries



Helping to Improve Young Patients' Quality of Life at Children's Kidney Centre

NKF continues to play a vital role in supporting the Children's Kidney Centre (CKC) to help children and young persons with kidney disease and ensure none of them fall through the cracks. Our support for a variety of treatments related to their kidney disease has helped ease the financial burden of having not only a lifelong chronic condition, but also the added complexity of childhood onset with its implications on growth and development through the following ways.

\$1.7 million funding for Children's Kidney Centre and its core programmes



- Offers both HD and PD options which is important, as changes in dialysis modality do not require them to seek treatment at another place. As these young children require lifelong dialysis treatment, the support also helps the parents, especially where there are insufficient resources for MediShield premiums which would aggravate the family's financial difficulties.
- Focuses on chronic kidney disease management to not only provide medications for the treatment of the primary disease, but also to prevent long-term medical, physical and psychosocial complications as well as increasing disease burden and healthcare costs as they reach adulthood, so that they will be able to have a better quality of life and similar opportunities as their peers.

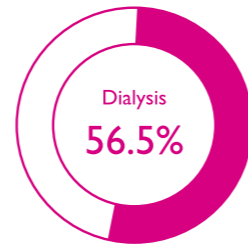
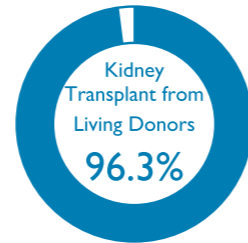
- Alleviates the cost of a transplant to help relieve the financial burden on the parents. These parents are also often financially "sandwiched" as they have to provide for the siblings of the patients and also their own elderly parents who might be dependent on them, leaving limited MediSave balance for themselves.
- Helps those who have or are at risk of developing diabetes through programmes that support prevention, such as the insulin pump programme. Patients who have developed drug-induced diabetes as a result of their transplant are also well-supported.

Promoting Kidney Transplant – The Best Solution

Kidney transplant is one of the treatment options for kidney failure. However, many people are not familiar with kidney transplant and harbour many misconceptions about it, such as the low success rate for most kidney transplant surgeries, the body being very weak after the surgery, the recipient not being able to work or take care of their families, and kidney transplant being very expensive as compared to dialysis. NKF continues to debunk these myths by sharing information about kidney transplant and discussing the possibility of going for a kidney transplant with patients and their caregivers.

Kidney transplant is the best treatment option for kidney failure as the newly transplanted kidney can almost completely replace the lost functions of the failed kidney, allowing the patient to live life normally. With advanced technology being used in kidney transplant surgeries, the success rate of a kidney transplant in Singapore is high. With proper care and diet and timely medications, one can lead a perfectly normal life after a kidney transplant. A patient who receives a kidney transplant can enjoy a better quality of life and longer life expectancy than those dependent on dialysis. Compared to the costs of a lifetime of thrice-weekly dialysis, the one-time cost of undergoing a kidney transplant is a better choice.

5-Year Patient Survival Rate



Source: Singapore Renal Registry Annual Report 2021

NKF's Kidney Live Donor Support Fund encourages more living donors to donate kidneys to their loved ones through the provision of financial assistance for lower-income patients.

99 applicants have received support since the inception of the Fund.

"It was without hesitation that I would donate my kidney to my mum, she sacrificed her health and life to raise me up to who I am today.

My mum is the woman who gave me life. I would do it all over again just to give her a kidney."

Mr Mohamed Helmy, 29, who gave his mother a new lease of life

FORWARD >>

Building for the future



For the past 11 years, kidney failure patient Mr Muhammad Izzad Aman had to juggle between thrice-weekly dialysis sessions and his school and work commitments. The effects of his medications and treatments, frequent hospitalisations and accidents had caused him to lose his jobs.

Yet, amidst the difficulties, Izzad remained positive and motivated to learn and pick up important skills. He grabbed every job opportunity as it came along. Now, at 29, he works as a private hire driver.

He looks forward to spending more time with his wife, Ms Nur Sharmin, whom he married in 2021. Despite learning of his diagnosis, Sharmin has been supportive of him and remains by his side through thick and thin since they were friends in their teenage years. The couple continues to overcome the many challenges that come their way together. To support their family and dreams of having children eventually, both husband and wife work hard to obtain dual income and savings.

With the quality treatment and care that I receive, I can keep improving, work hard in my job and stay positive. The subsidies from NKF also help me save a bit, and it will help us build a family in the future.



The good treatment helps me to stay active so that I can continue to lead a simple yet purposeful life. I count my blessings.



Living life to the fullest

Mr Anthony Low, 81, has been on haemodialysis at NKF for the past six years. He switched to haemodiafiltration (HDF) in 2021 as he is medically suited for it and had learnt of its benefits. HDF is a type of dialysis treatment which improves middle molecules clearance, in addition to removing small molecules.

Mr Low has been doing well on this therapy. He has a zest for life and keeps himself physically active and mentally alert. The father of two and grandfather of four continues to work in logistics planning, a job he has held for more than four decades. He moves around independently, drives himself to the dialysis centre for his thrice-weekly dialysis sessions, does grocery shopping and has regular fellowship with his church friends. He strives to stay productive and lead a fulfilling life as much as he can.



With nocturnal dialysis, I feel more fresh, more energetic and healthier. I have lesser diet restrictions and can drink more fluids.



Feeling revitalised and energetic

In 2021, Mr Muhammad Alwi, 34, had to undergo dialysis after being diagnosed with kidney failure. About a year later, he switched from conventional haemodialysis to nocturnal dialysis because he was told that the slower therapy – due to its extended duration – results in less fluctuation in blood pressure and less stress on the heart. There are also less side effects like giddiness and cramps. Having to do overnight therapy while he sleeps also gave him a sense of assurance of being able to hold a full-time job during the day and provide for his family.

Since Alwi started these longer sessions, he feels much livelier. His phosphate and fluid levels have improved, which reduces his chances of developing bone disease. In the daytime, he is able to concentrate better in his job as a project engineer in construction, as well as spend more time with his family.





PD gives me more flexibility. I'm able to work and do the things I enjoy, like travelling, playing musical instruments and art, which I find therapeutic. I'm living a happy and meaningful life.

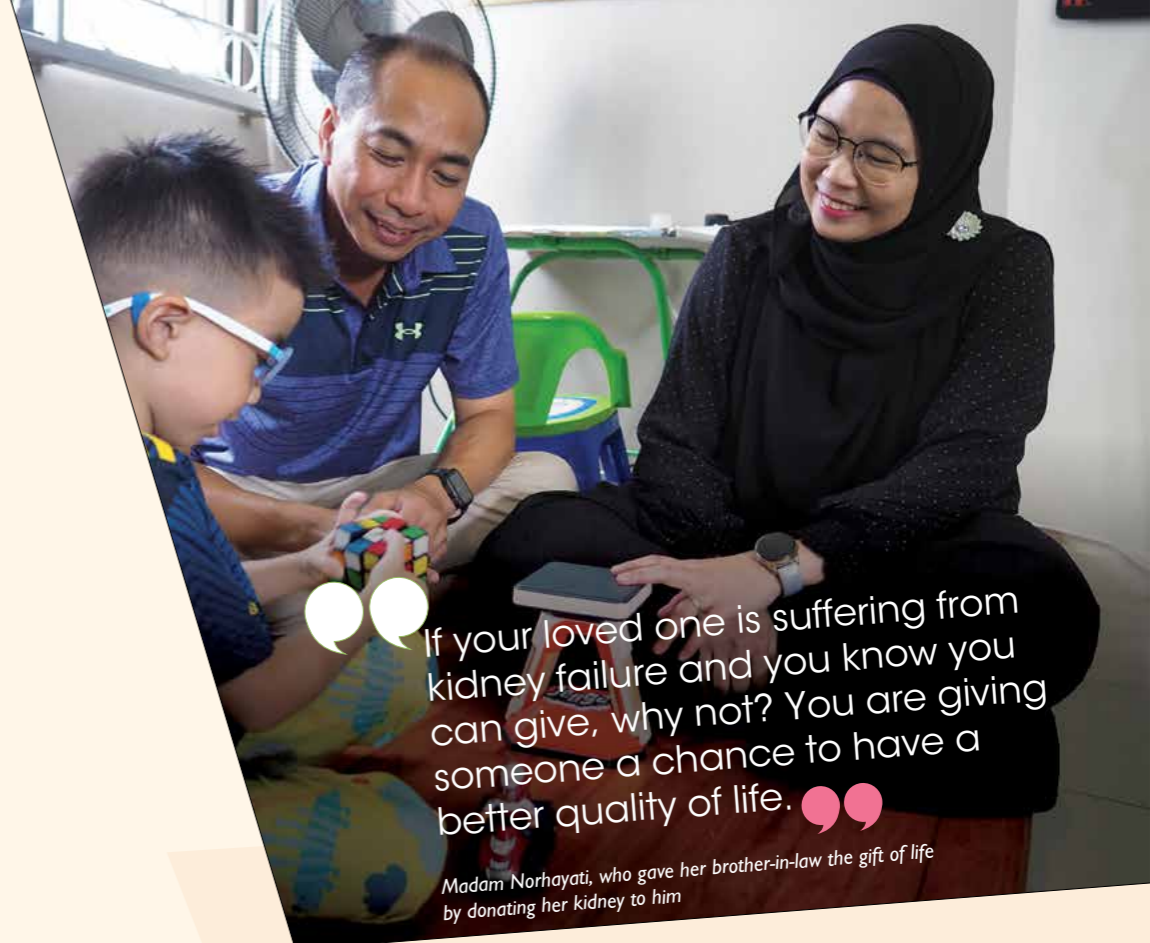
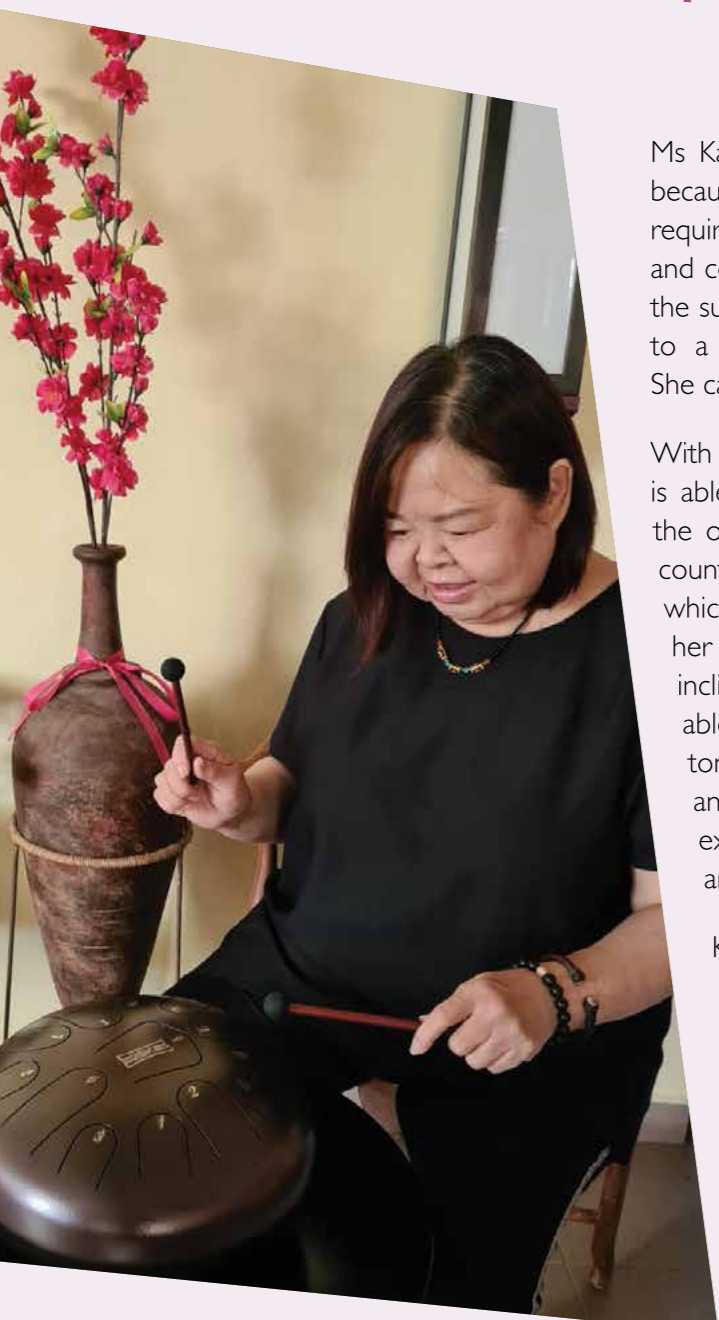


Towards better living and healing

Ms Katharina Seng, 59, chose peritoneal dialysis (PD) because it is a painless procedure, as no needling is required. She is able to carry out her treatment effectively and conveniently in the comfort of her home and with the support of her husband, without the need to travel to a dialysis centre for thrice-weekly haemodialysis. She can also save on travelling time and cost.

With PD allowing her to enjoy a flexible lifestyle, she is able to work part-time at a clinic. It also gives her the opportunity to travel abroad, and she has visited countries like Malaysia and Australia. Her PD solution, which she requires for her treatment, is delivered to her hotel room for her convenience. Being artistically inclined with a passion for music and art, she is also able to spend quality time playing the Chinese flute, tongue drum and piano, as well as do watercolour and acrylic painting. These activities enable her to express her feelings and emotions for wellness and healing.

Katharina is a member of NKF's PD Support Group, where she finds friendship, encouragement and support from fellow PD patients. They share their life experiences with one another, which helps them in their rehabilitation journey. She is living her life purposefully with a positive mindset and looks forward to many more fulfilling years ahead.



If your loved one is suffering from kidney failure and you know you can give, why not? You are giving someone a chance to have a better quality of life.

Madam Norhayati, who gave her brother-in-law the gift of life by donating her kidney to him

A selfless act of humanity

It all stemmed from Madam Norhayati Mohd Ali's desire to give her brother-in-law, Mr Roslan Bin Saydeh, his life back. Roslan was diagnosed with kidney failure in 2017. Then 57, he was constantly in pain and agonising over his fate. Roslan's younger brother, Mr Mohd Taufik, was originally supposed to give him his kidney as he was a suitable match. But before the transplant could take place, Roslan had to undergo an angioplasty due to a heart condition. He recovered six months later after a successful surgery. As fate would have it, Taufik, who needed to go for a re-test, was found to have a high blood sugar level and it was risky for him to undergo a transplant operation.

In the midst of uncertainties and trepidation, Norhayati, then 39, gallantly stepped forward to offer her kidney to Roslan. She was found to be a suitable match and the successful transplant took place on 15 January 2020. Norhayati and Roslan are thankful that they are able to benefit from NKF's Kidney Live Donor Support Fund, which helps defray the cost of post-transplant expenses like medical check-ups and medication.

Roslan is doing well with proper care, diet, regular screenings and timely medication. For Norhayati, she has resumed her normal routine as a homemaker and continues to take care of her family's needs, especially that of her five young children. She hopes that her gift of life will spur others on to come forward to give their kidney to those in need.



Mr Roslan, who is enjoying a new lease of life after the kidney transplant



Holistic Care for Dialysis Patients

The burden of kidney failure carries significant financial impact on patients and their families, as dialysis is a long-term care. Dialysis patients, more often than not, have to quit their jobs or reduce their work hours or responsibilities after starting dialysis. Financial stress will further lead to many psychological issues such as anxiety and depression, and loss of self-esteem may manifest. Much research have shown us that psychosocial care is equally critical to medical care and rehabilitation, and the lack of it can be detrimental.

NKF's Integrated Care Team (ICT) – made up of renal doctors and nurses working hand in hand with other allied health professionals such as social workers, clinical psychologist, dietitians, therapists and exercise specialists – takes on a multidisciplinary, patient-centric approach to provide continuum of care. In partnership with the patient, caregiver and next-of-kin, the team helps to ensure seamless, effective and efficient care, so that the whole spectrum of a patient's health needs from prevention to the end of life is met.

Empowering Patients through Self-Care

Many studies have shown that self-care is an imperative tool in engaging and empowering patients, especially in the long-term care and chronic diseases setting. Once patients are allowed to make autonomous decisions and embrace proactive self-care behaviours such as monitoring their conditions independently, following doctor's prescription and advice, eating right and exercising when appropriate, their treatment outcomes are likely to improve. NKF introduced a self-care component as an essential part of its integrated care approach to empower dialysis patients to take ownership of their long-term dialysis care journey and manage their dialysis treatment and its associated complications.

Training is conducted to teach patients to monitor their blood pressure and blood sugar levels at home, practise infection control through hand and access site hygiene, and prepare supplies required for the treatment sessions.



Know Right Start Right Programme

Our Know Right Start Right (KRSR) is a pre-dialysis education programme targeted at patients in the advanced stages of chronic kidney disease. Through collaboration with restructured hospitals and community partners, the increased awareness and continuous support provided by NKF can help ease patients into their preferred treatment regime and the number of unplanned/emergency dialysis will be reduced. 86 patients and caregivers attended KRSR webinars.

NKF Kidney Resource Group

NKF Kidney Resource Group on our Facebook is focused on providing useful information and resources relating back to general kidney health and nutrition tips for our patients and caregivers. It is also a platform to gather all our renal friends together to help raise awareness of chronic kidney disease (CKD) and promote healthy living to people of all ages, as well as generate discussion among members of this group on information posted. The group has more than 220 members.

Patient Experience Survey

We take every feedback seriously so that we can improve and provide better care. A patient experience survey was conducted to gain insights into patients' overall experience and perception. This will help us to further enhance their care journey for better clinical outcomes.

89%
Good patient experience in dialysis care

91%
Trust in dialysis treatment

91%
Willing to recommend NKF to potential patients

A 10-point scale was used and the above are percentages of patients surveyed who gave a rating of 7 to 10.

Life@DC

Through our programme Life@DC, NKF's multidisciplinary teams and community partners support patients to build an empowering community from the ground up – for patients and by patients. At the core of Life@DC is the creation of a warm and inclusive community with a “kampong spirit”, which is built on a strong foundation of care for one another; a communal space for patients to gather and make it their own; the forging of strong bonds and social integration through meaningful and engaging therapeutic activities; and the sharing of cherished moments and celebration of key occasions together. Activities and outings are co-led and co-driven by Patient Buddies, exemplary individuals who spend valuable time and effort in crafting suitable activities for their fellow patients. This endeavour has garnered the participation of over 50 patients so far.

“I am appreciative of the monthly food rations and vouchers for daily essentials, which have helped me out of a tight financial situation.”

Mr Sulaimi Mohamed Sapari, who is benefitting from the Enhanced Grains of Hope programme

“It’s not easy for patients with kidney failure to find work. This is a good chance for me to slowly adapt to working again and pick up F&B and customer service skills. I now have more confidence in myself.”

Mr Desmond Chua, who works as a barista at NKF's Kaki Corner, where beverages are served with donations going towards kidney patients



Enhanced Grains of Hope Programme

NKF's Enhanced Grains of Hope is a home intervention programme helmed by volunteers to support needy patients by delivering basic food provisions and sundries, and providing emotional and mental support during their home visits on a monthly basis. The programme supports 35 patients who are socially isolated, lack a strong support system in caregiving or lack access to health and social-related entities, with the end objective of helping them re-connect and re-integrate into the community through the help of volunteers.

Patient Employment Rehabilitation Programme

This programme, sponsored by the Kwan Im Thong Hood Cho Temple, helps patients find suitable employment. Patients are given support to increase their employability – with the training provided to upgrade their skills – and are referred to external hiring partners. Within NKF, patients are engaged to provide services on a contract-for-service arrangement. A total of 16 patients attended relevant training programmes to find jobs and 14 patients reintegrated into the workforce and regained a sense of self-worth and dignity.

“At first, I was worried that coffee-making might be a difficult skill. But the training and supervision given to me since I joined Kaki Corner in January 2022 have made me grow in confidence and strengthened my self-belief. I am looking forward to the upcoming internship.”

Mr Thomas Pang, who has benefitted from working as a barista at NKF's Kaki Corner





"I've been walking with a limp due to the pain in my knee. Thanks to the exercise specialists who guided me with the proper exercises, my knee condition gradually improved and the pain is gone."

Madam Mariana Mahat, who benefitted from the exercise programme

Supporting Clinical Research and Medtech

NKF has been registered as a Research Institution with the Ministry of Health since June 2021, an important milestone towards our strategic thrust in Research. We are also now a party of the Public Sector, Master Research Collaboration Agreement (PS MRCA). The PS MRCA helps to simplify, standardise and encourage collaborative research and activities based on terms and conditions in the main MRCA, thus easing collaborations with Public Health Institutions (PHI). Since its inception, we have worked with various academic and tertiary institutions on diverse research. These include:

Occupational Therapy

NKF's Occupational Therapy (OT) programme provides assessments and interventions to help patients perform day-to-day activities, allowing them to maintain essential roles in their lives and prevent falls. OT's scope also includes caregiver training, equipment prescription, lifestyle and home modifications, as well as tapping on the available and appropriate funding and resources for needy patients. 1,619 patients benefitted from OT while 104 nurses benefitted from OT training. We had a 100% success rate for 13 NKF-assisted cases for HDB's Enhancement for Active Seniors (EASE) home modification programme.

Nurse-led 8 points lung ultrasound (LUS)

This project was piloted in collaboration with one PHI at one of our dialysis centres to examine the effects of dry-weight titration guided by 8 points LUS on ambulatory blood pressure. We aim to replicate this at all our dialysis centres.

Retinal Image-based Deep Learning Algorithm (DLA) for Detecting Chronic Kidney Disease (RetiKid)

The Singapore Eye Research Institute (SERI) developed and validated DLA by utilising retinal images and data from a large population-based study in Singapore (Singapore Epidemiology of Eye Diseases [SEED]) and two more independent datasets in Singapore and China. We collaborated with SERI for this two-to-three year project that started in February 2022 at our Chronic Kidney Disease (CKD) clinic for targeted high-risk groups, with the aim to further validate RetiKid for detecting clinically significant stage 3 and above CKD.

Exercise Care Plan

Multiple exercise platforms such as home-based care plans, tele-classes, exercise counselling and in-centre group classes have been carried out by our exercise specialists to provide a holistic exercise approach for dialysis patients. 1,219 patients benefitted from the individualised home-based exercise care plan while 93 patients regularly attend in-centre and virtual classes to improve muscle strength and balance.

Diet Counselling and Intervention

Dialysis patients need to modify their diet intake to meet nutrition goals according to their health condition. A team of nine dietitians provided nutrition counselling face-to-face and teleconsultation to our patients, so that they can make appropriate dietary choices and positive behavioural changes towards eating right. 3,044 patients with nutrition-related problems received timely diet counselling and intervention while 1,908 malnourished patients benefitted from high energy and/or high protein oral nutrition supplements.



"I received good support from my dietitian and appreciate the diet counselling. By following her advice, my protein and haemoglobin levels have improved. Overall, I now feel much better than before."

Ms Yap Dan Ni, who benefitted from the diet counselling

Reducing Progression of Chronic Kidney Disease

Even if “prevention is better than cure” is an old adage that is commonly brought up, it is still a wise strategy. Shifting the focus of renal care to preventive strategies is not only a stopgap, it can also solve the root problems. To curb the rising problem of kidney diseases, NKF remains strongly committed in our efforts to strengthen the upstream work. While NKF provides dialysis treatment and care to kidney failure patients, our greater mission is to prevent or delay any person from being afflicted with kidney failure through our preventive care model. This includes broadening its support network for early CKD intervention and management and continuing to redouble efforts to educate as many people as possible about chronic kidney disease, kidney failure and its debilitating effects. We encourage people, from the young to the elderly, to lead a healthy lifestyle and actively reach out to targeted high-risk groups such as family members of dialysis patients. We reached out to 167,337 people through various onsite and online platforms.



“... I would like to commend the good work of NKF in helping to support those with chronic kidney disease. It remains vital to Singapore. **Moving forward, NKF will have an important role in our Healthier SG strategy to improve health outcomes and better manage chronic diseases through preventative care. I look forward to our continued partnership in the years to come.**”

Mr Lawrence Wong,
Deputy Prime Minister and Minister for Finance,
in his speech during NKF's Charity Dinner 2022

FORWARD >> 

Targeted Intervention and Early Detection

Initiating a Chronic Kidney Disease (CKD) Intervention Programme

As it is crucial that kidney disease is discovered early so that treatment can be initiated to better manage the condition and prevent progression to kidney failure, NKF has started a CKD intervention clinic programme at the NKF Centre that focuses on high-risk groups, that is, those with hypertension, diabetes, of certain high-risk ethnicities and family members of dialysis patients. These groups can avail of one-stop services like free health screening, consultation by dietitians, guidance on exercise programmes by exercise specialists and referrals to partner clinics for treatment intervention. By fostering collaborative partnerships with different care providers and community partners, primary care and specialised renal care are also better integrated to help prevent CKD and decelerate progression of kidney failure.



Collaborating with Various Malay/Muslim Organisations

Working with mosques and community partners, NKF jointly organised hybrid health forums and placed kidney health resources across the zones. Starting with the East, the first forum was in conjunction with Ma'al Hijrah, the Islamic New Year, to encourage the community to make a fresh and healthier start. The next was conducted in commemoration of Maulidur Rasul to address hypertension, diabetes and kidney failure, and encourage the community to be both physically and spiritually healthy. The remaining sessions were held in line with World Kidney Day and the panel discussed how participants with chronic conditions can better prepare for the coming fasting month and better manage their condition to prevent kidney disease. Through the collective efforts, 13,540 people were reached.



“Looking at the worrying trend of kidney diseases and related chronic diseases among our Malay/Muslim community, such community outreach programmes will help increase awareness within our community.

I personally encourage more organisations to take on such health forums as the messages can be easily understood and are beneficial for our community.”

Ustaz Muhd Ridzwan Bin Abdul Manap
Head of Community Engagement
Darul Aman Mosque

The Path Towards a Healthier Nation

Schools

Together with our school partners, we organised virtual assembly talks and learning journeys at our Kidney Discovery Centre, with the aim of empowering students with take-home tips that they can share with their family. 85,000 students and educators participated in our kidney health education activities.



“Thanks for the informative and well-executed experiential learning lesson for my students. The most impactful segment was the sharing by your patient on her dialysis experience and her resilience in the face of adversity. **My students had not only learnt content knowledge, but also the unmeasurable objectives of education. I applaud NKF for the amazing work that you are doing!**”

*Mrs Chu-Lam Non Har
School Staff Developer, Dunman High School*

“**Very informative and well presented. I learned so much in this talk and am motivated to live healthier.**”

*Ms Verina Goh
Student, Ang Mo Kio Secondary School*

“**I feel that the patient story helped develop empathy in the students as it was an authentic scenario.** Also, the models of the dialyser allowed students to be more aware of the equipment used during dialysis.”

*Madam Jocelyn Chew
Teacher, Anglican High School*



“The content was appropriately pitched at the students’ level and the delivery was engaging and effective. Both the students and I gained a better understanding of the process of haemodialysis and peritoneal dialysis through the videos. **More importantly, we picked up important tips on how to take good care of our kidneys.**”

*Mrs Lim Woon Foong
HOD Science, School of Science and Technology, Singapore*

Kidney We Care Movement and Champs VIA

Change agents would be how we best describe the many students that answered the call to make a difference in their community by raising awareness of kidney disease to their peers and community. Since its launch in January 2021, 10 Kidney We Care groups reached over 5,000 of their peers and 5,000 NKF patients – from social media campaigns and student-led booths, to collaborating with a local gourmet company to develop dialysis-friendly cookies for patients. Another 11 groups of students participated in NKF’s Champs Values-in-Action Programme this year to show patients the support of the community, by putting together care packs for the dialysis centres in their vicinity.



“After recognising the prevalence of kidney failure in Singapore, we became interested to help patients and encourage our peers to take preventive measures.

Our team also plans to expand the outreach through self-made educational videos to spread important information about kidney health. Hopefully, we can target younger audience on other popular platforms such as TikTok and YouTube.”

*Ms Kellie Ng, Ernest Ng and Ryan Kaw
KWC X SUTD Project Renal*

“We are grateful to have this opportunity to work with NKF on this, and really appreciate the support we have gotten throughout the entire project. This process has undoubtedly been enriching and fulfilling, and we have gained so much from it.”

*Ms Sarah Tay and Sandra Tay
KWC Project H2K Members*

7-Day No Sugary Drinks Challenge Charity Drive

Into its fifth year running, the 7-Day No Sugary Drinks Challenge Charity Drive is specially curated to target the youths and encourage healthy dietary habits from an early age. It also inculcates in them the values of compassion and empathy for others through acts of service. Students were encouraged to replace sugary drinks with plain water and money



saved from giving up of sugary drinks was donated to NKF to help needy kidney patients. The fundraising feat reached out to over 18,000 students from 18 educational institutions between 1 July 2021 and 30 June 2022. A total of \$29,087 was raised with expenses amounting to \$3,407.

“**Through this activity (7-Day No Sugary Drinks Challenge Charity Drive), our students gained greater awareness about the harmful effects of consuming too much sugar and how that may lead to obesity and kidney failure.**

They also put the values of resilience and compassion into action when they abstained from sugary drinks and donated their pocket money. It is a very meaningful initiative and we are happy to have taken part in it.”

*Mr Muhammad Amin Mokhtar
Health Education Coordinator, Mee Toh School*

Community

Creating a healthier nation is an achievable goal if we work together. To do our part in raising kidney health awareness in the community, we established a collaborative framework with GP Clinics to place brochures and posters at their premises, enabling the community to find the resources they would need from the places they seek medical help from. Our resources can now be found at 33 GP Clinics.

NKF also collaborated with the National Library Board to organise talks and displayed haemodialysis and peritoneal dialysis exhibits at the public libraries. For greater community engagement and awareness on kidney health, selected dialysis centres were opened on Sunday to engage the community. Working with our community touchpoints, 86,691 people were reached as we sought to make access to preventive kidney health resources easily available in the community as we worked towards the move to the new normal.



Community Outreach Day NEW

Community Outreach Day kicked off at our dialysis centre in Clementi on 9 January 2022, with the aim of providing a one-stop centre of care and support on kidney health and kidney disease prevention to the general public. They were able to ask questions and gather more information through our nursing team and outreach ambassadors. Interactive activities, dialysis centre tours and health talks were conducted. To keep the momentum going, this outreach event was also organised at our dialysis centres in Toa Payoh West, Woodlands and Ang Mo Kio, engaging a total of 331 participants thus far. The community outreach days will continue at other dialysis centres all year round in our efforts to motivate the community to take proactive steps to maintain a healthy lifestyle.

Kidney We Care Health Forums

Kidney We Care Health Forums were organised to leverage the digital platform. A total of eight sessions were organised throughout the year. The virtual forums were one of our solutions to engage the community as we moved towards the start of endemic living. It also allowed us to bring experts together. Health Forums such as “Motivasi Ramadan” (conducted in Malay) and “Am I at Risk for Kidney Disease” (conducted in English and Mandarin) were held on 22 and 27 February 2022. Healthcare specialists in primary care, renal care and dietetics covered



topics that included: managing chronic diseases to keep kidneys healthy, importance of kidneys and symptoms of kidney disease, and lifestyle & nutrition tips to stay healthy. In partnership with Darul Makmur Mosque, about 1,900 people joined us live or online for “Motivasi Ramadan”. Another 600 members of the public tuned in online for the Health Forum on 27 February for an informative session, spurring them on to lead a healthier lifestyle.



Kidney We Care: Let's Revolutionise!

The second edition of Kidney We Care: Let's Revolutionise! (KWCLR) was held from 28 February to 13 March 2022. The charity event, helmed by over 200 volunteers, urged the nation not to sugar coat the silent killer – kidney failure – and raised funds. Over 40 virtual activities comprising a plethora of engaging workshops and activities such as photography, calligraphy, pastel nagomi art, cooking demonstrations, virtual escape room and around-the-world virtual tour were organised. Members of the public were also encouraged to cook healthy meals and stay active through #CookWithKWCLR and #JamWithJon challenges on our Instagram page @kwc. letsrevolutionise. The event raised over \$88,000 for our patients.



Race Inspired!

The second edition of our virtual sports event - Race Inspired! was held from 18 March to 7 April 2022. With the strong support from about 1,200 participants of all ages, including corporate and community partners, as well as Ministers and Members of Parliament (Minister Ong Ye Kung, Minister S Iswaran, Senior Minister of State Chee Hong Tat, Minister of State Gan Siow Huang, Senior Parliamentary Secretary Eric Chua and Member of Parliament Poh Li San), Race Inspired! helped raise greater awareness on kidney failure and motivated the community to take proactive steps to maintain a healthy lifestyle. A total distance of 86,821km was achieved and \$348,713 was raised to benefit kidney failure patients, with expenses amounting to \$38,637.



Launch of Chatbot NEW

With the accessibility and digitalisation of our resources on our website, it's easy to learn all about kidney health and how to lead a healthy lifestyle. And as part of our ongoing efforts to enhance the navigation experience, we launched our chatbot, where web users can chat with K-Buddy to get answers to their queries about NKF, kidney health, dialysis treatment and more.



"My heartiest congratulations on the excellent inaugural issue of Renal Outlook!"

The publication is the result of the close partnership between NKF and renal professionals from institutions across Singapore. It reflects the strong sense of common purpose among the renal care community and its unwavering commitment to preventing renal disease and its progression, and to high quality, holistic care of our patients.

Renal Outlook is therefore an important platform that highlights and shares insights and evidence on key aspects of renal care that will be relevant for a broad spectrum of health professionals and beyond."

Prof Tan Chorh Chuan
Executive Director
MOH Office for Healthcare Transformation

Driving Innovation in Renal Care

Renal Outlook – A Platform for Knowledge Sharing

NKF recognises the need to work collectively and in a concerted way to advance renal care in Singapore through continued education and research. Our inaugural issue of our renal publication titled Renal Outlook, is a collaborative effort with peers and colleagues to cover a broad range of clinical and educational topics along the entire scope of renal care. It provides content that is relevant to, and reflective of, the growing diversity of the renal care community, and serves as an important platform for knowledge sharing among healthcare professionals and partners in primary care and specialised renal care.

The multidisciplinary insights in this annual publication will play a vital role towards the development of many excellent programmes and initiatives to help prevent chronic kidney disease and slow down the progression of kidney failure.



Improving Quality and Efficacy of Renal Care

Accreditation for Clinical Nursing Education

NKF received accreditation for Clinical Nursing Education from the Singapore Nursing Board (SNB) for six dialysis centres in June 2022 for a three-year period. We have 207 preceptors, two clinical instructors and two nurse educators, as well as a work instruction and policy procedure manual to support students' learning and achievement of learning objectives. These will help create a valuable learning and clinical experience through reflection and challenge traditional approaches; develop a comprehensive and structured analysis of performance with better outcome of care; empower nurses to improve the processes and change current practices in delivery of care that ensure the service provided meets or exceeds the quality healthcare standards; heighten teamwork, staff satisfaction and morale; and provide recognition on the quality and effectiveness of clinical sites that facilitate nurses' clinical learning. Constantly striving towards quality and holistic nursing care will lead to better treatment and rehabilitation outcomes for patients.



Scaling greater heights with your strong support

Giving Time, Touching Lives through Volunteerism

Volunteers Continue to Uplift Patients' Lives

The fight against Covid-19 is still not over. While NKF frontliners continue to battle on to ensure the health and safety of our patients, we are truly blessed to have a group of volunteers and partners who journeyed with us throughout the two-year pandemic. From taking on advocacy work through the spreading of kidney health awareness on social media platforms and at their own physical premises, to rallying those around them to help fundraise or put together care packs for our patients, the influx of kindness and warmth never ceased. These gestures truly exemplify the importance of volunteers and community support in helping us ensure the best possible care for our patients.

Rising Up Together with Our Volunteers

NKF's foundation has been built upon a solid base of dedicated volunteers. Into the 15th year of our volunteering programme, Circle of Hearts, we believe it is now apt for a team of volunteer leaders to rise up and inject fresh ideas and perspectives into our programme, so as to bring forth a new era of volunteerism in NKF. Embarking on this monumental journey in the formation of a Volunteer Committee are Ms Pratibha Kurnool, Chairperson of the Volunteer Committee and CSR Champion from Cognizant, and Dr Tim Xu, Vice-Chairperson of the Volunteer Committee and Assistant Professor at Singapore Institute of Technology. Together with seven other committee members from various professions and backgrounds, they will execute and oversee volunteer-related activities alongside our Volunteer Management Team to propel Circle of Hearts to the next level and further NKF's vision of Giving Life & Hope.

"River Valley High School (RVHS) is very grateful for the opportunity to work with NKF this year. This experience has allowed our students to be more aware of the diverse needs of the community, as well as come up with innovative ways to make meaningful and sustained contributions to society. **Our partnership with NKF has empowered our students as they renew their commitment to the community beyond school, thus strengthening unity and service amongst their peers in RVHS who collaborate on the same project, as well as in the larger community.**"

*Ms Khaw Kai Yim, 34
Subject Head, Student Leadership (JC)
River Valley High School*

"A dialysis centre is not the first place that comes to mind when you think of volunteering. However, I have a soft spot for dialysis patients who, more often than not, fall prey to kidney failure due to uncontrolled diabetes. **My grandfather has been fighting the battle with diabetes for nearly two decades now. He has to be careful with his food intake and takes his insulin daily. I wanted to help others who were going through this journey as well, bringing joy where I can and lending a hand where I am able to.**"

*Mr Chu Yuan, 22
Student, National University of Singapore and Dialysis Centre Volunteer, who contributed 22 volunteering hours*

"It is truly heartening to know that in spite of the ongoing pandemic, we still have so many people and communities rallying behind us.

For me, I just do what I can within the best of my ability to repay the kindness we have been receiving – by being open about my personal journey as a kidney failure patient and hoping that they will learn more about the disease and not fall prey to it."

*Mr Mohamad Faizal Bin Kamaruddin, 43
Patient Volunteer who contributed 24 volunteering hours*

"Pastel Nagomi Art is a therapeutic art form that can be enjoyed by people from all walks of life. **Through Kidney We Care: Let's Revolutionise!, we created artworks centred around healthy food, active lifestyle and kidneys. Not only were we able to share our talents and skills in pastel nagomi art for a meaningful cause, we also gained insightful knowledge about kidney health through volunteering for this event.**

The opportunity to volunteer our services to NKF was an enriching experience for all of us. Thank you NKF for having us!"

Pastel Nagomi Artists



Our caring volunteers who have continued to journey with us during the pandemic, with patients whom they are helping

Charting New Frontiers in Fund Sustainability

Being Innovative to Enhance Efficacy in Fundraising

It became even more evident that during a crisis like Covid-19, we needed to acclimatise quickly to the evolving situation. The challenges posed made us re-evaluate our fundraising and engagement programmes and initiatives from a different angle, by re-configuring existing approaches and creating new avenues. By thinking out of the box and encouraging creativity beyond the norms, we were able to leverage the opportunities presented to introduce new events and enhance our existing fundraising and engagement programmes, so as to continue meeting the evolving needs of our patients.

While we continue to adapt new fundraising strategies, LifeDrops continues to be one of our major sources of donations where donors give conveniently through automatic recurring deductions. This method of giving helps keep our fundraising expenses low, with the savings going towards helping more needy patients. \$13 million was raised through LifeDrops, contributing to 53.3% of the overall donations.

Fundraising expenses amounted to 12.5% of the total funds raised, well below the 30% as stipulated by the Charity Regulations.

With our strong partnerships, NKF will continue to build a robust giving ecosystem and provide kidney patients with affordable quality dialysis treatment and holistic care.

NKF Charity Golf 2021 - Swing for Hope

NKF organised our inaugural Charity Golf on 24 September 2021, at the Tanah Merah Country Club, Tampines Course. Flights were sold out and 104 golfers teed off in good spirits. A total of \$599,803 was raised through this event to provide subsidised dialysis treatment and holistic care for NKF patients, with expenses amounting to \$71,753.



"I've seen for myself how patients suffer by having to undergo dialysis treatment for the rest of their lives. Long-term support is therefore crucial to ensure the continuity of dialysis treatment and care for them. I'm glad to do my bit through my monthly giving to provide artificial kidneys (dialysers) for needy kidney patients."

Ms Sandra Song Lee Giok



NKF Charity Dinner 2022

In conjunction with NKF's 53rd Anniversary, we organised our first-ever hybrid charity dinner on 27 May 2022 at Shangri-La Singapore. Mr Lawrence Wong, Deputy Prime Minister and Minister for Finance, graced the event as the Guest-of-Honour. Over 400 guests and sponsors attended the dinner physically and virtually. Through this event, a total of \$1,009,239 was raised towards providing subsidised dialysis treatment and holistic care for patients, with expenses amounting to \$120,317.



NKF eShop – Shop with a Heart

Launched in 2020, the NKF eShop is an alternative e-commerce and retail platform to help shoppers find their special gifts while doing good at the same time. Sales proceeds are channelled towards providing subsidised dialysis treatment and holistic care for patients. The eShop also provides our generous donors with an alternative way of giving back, through the sponsorship of their products and services. For the financial year, we engaged more than 20 new partners and raised \$12,796 through a variety of curated sales on the platform. Household favourites such as the returning Christmas Market and Chinese New Year 'Huat! Huat! 2022', along with the newly introduced Stay Home Essential Sale provided our shoppers with thoughtful gift options for these special occasions.



Vesak Day Charity Drive

With the support of Buddhist temples and other supporters, \$80,270 was raised through outright donations, physical donation box placements and online donation platforms to benefit our patients, with expenses amounting to \$1,275.

Dialysis Machine and Chair Sponsorship

400 caring donors contributed \$1.67 million to sponsor new medical equipment including 74 new dialysis machines and 26 dialysis chairs to benefit our patients at various dialysis centres. As one machine or chair can benefit six patients, over 600 needy patients are benefitting from the generous gifts. In recognition of their kind contributions, naming plates were mounted on the medical equipment.

"Helping the needy in the community is something that my brother and I always wish to do, and we are glad to continue our father's legacy of sponsoring dialysis machines to benefit needy kidney patients."

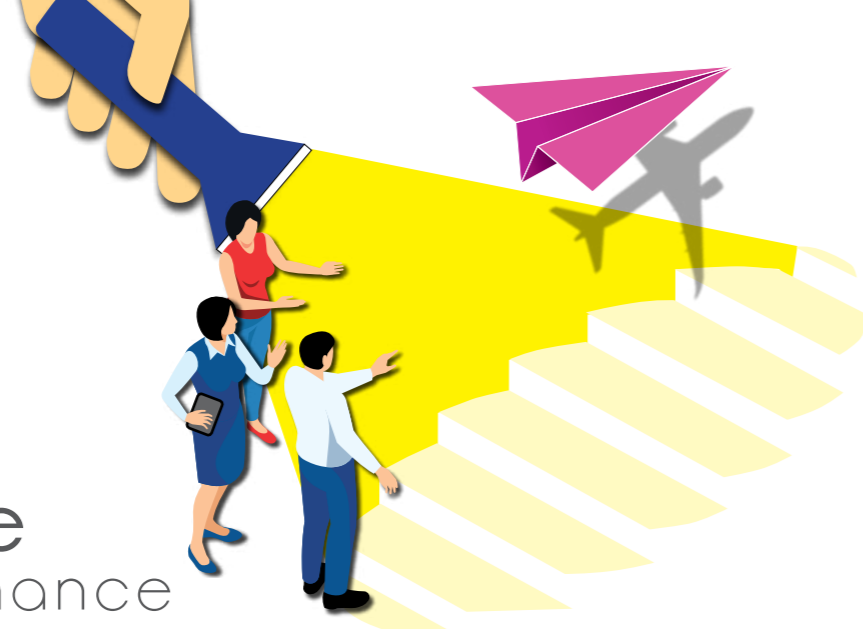
Mr Leo Lee

Director of Prime Commodities Trading Pte Ltd

About 90 cents

of every dollar donated went directly towards patient care

Corporate governance



Roles and Responsibilities of Board of Directors

The Board acts in the best interests of NKF, with the aim of improving the quality of care for patients who are afflicted with kidney disease and raising awareness of kidney disease prevention. It also ensures there are adequate resources for the operations and programmes of NKF, and that such resources are effectively and efficiently managed; there are processes in place to ensure NKF complies with all applicable laws, rules and regulations; and there is an appropriate code of conduct, which upholds the core values of NKF and its processes.

Day-to-day management of NKF is delegated by the Board to the management team headed by the Chief Executive Officer (CEO). Initiation and changes of new key programmes and activities, as well as significant transactions require the approval of the Board. The Board also reviews and approves the annual budget prepared by the management.

Board members are expected to avoid actual and perceived conflicts of interest. Where Board members have personal interest in business transactions or contracts that NKF may enter into, or have vested interest in other organisations that NKF has dealings with or is considering to enter into joint ventures with, they are expected to declare such interests to the Board as soon as possible and abstain from discussion and decision-making on the matter. Where such conflicts exist, the Board will evaluate whether any potential conflicts of interest will affect the continuing independence of Board members and whether it is appropriate for the Board member to continue to remain on the Board.

The Board has also ensured that NKF is in compliance with requirements in Financial Reporting Standards (FRS) and the Code of Governance for Charities and Institutions of a Public Character (IPCs).

Board Governance

The Board is governed by terms of reference with clearly defined scope, authority, duties and responsibilities, including matters pertaining to succession planning, composition and conduct of meetings. The Board strives to ensure that Board members, as a group, have core competencies in areas such as accounting and finance, business and general management, communications, healthcare, human resource, law, medicine, strategic planning and technology, and that it incorporates a degree of diversity. All Board members must be independent. Independence refers to not having any family, employment, business and other relationships with NKF, any related companies or their officers that could interfere, or be reasonably perceived to interfere with the exercise of the Board member's independent judgment made in the best interests of NKF. The CEO is an ex-officio non-voting member of the Board and attends all Board meetings. In addition, other members of management are invited from time to time to attend and make presentations at Board meetings.

The Board believes that there should be a good balance between board size, gender mix and diversity of expertise, so that the Board will be able to offer objective and quality viewpoints to ensure NKF is well governed and managed effectively. The selection and appointment of Board members are overseen by the Nomination Committee based on the terms of reference established, including the size of the Board and the term limits. As at end of the financial year, the Board had 14 members, none of which has served more than 9 years running. All Board members are volunteers and are not remunerated. In addition, Board evaluation is carried out annually for assessment of its effectiveness and to drive improvement, as appropriate.

Key Corporate Governance Initiatives

NKF is committed to lawful and ethical behaviour in all our activities and requires that our Board members, employees, volunteers and consultants conduct themselves in a manner that complies with all applicable laws, regulations and internal policies. There are documents that communicate and govern ethics of our Board members, Board Committee members, employees and volunteers. In keeping with this commitment and NKF's interest in promoting open communication, NKF has complied with the Code of Governance for Charities and IPCs. NKF's Governance Evaluation Checklist for the period 1 July 2021 to 30 June 2022 can be viewed at the Charity Portal www.charities.gov.sg.

NKF has a Whistle Blowing Policy which was updated in March 2021 to provide greater clarity on the whistle blowing criteria and the reporting channels. The updated Whistle Blowing Policy is publicly available on our website and provides accessible channels to

the Chairman of the Board, the Chairman of the Audit & Risk Committee and the Internal Auditor for the reporting of any serious concerns, unlawful activity or any unethical behaviour that could have a negative impact on NKF. All cases reported would be kept confidential to the extent possible to allow thorough investigation.

Risk Management Practices

Integral to delivering the strategic NKF outcomes, a rigorous risk management process is defined and articulated by the four lines of defence, namely policies and practices, controls and assurance, audits, and oversight by the Audit and Risk Committee and NKF Board. A dedicated Risk Management Department provides regular updates to the Audit and Risk Committee and NKF Board so that they have a transparent line of sight and communication with the NKF Management.

A Testament of Good Governance

NKF received these awards, which endorse our efforts in practising good corporate governance. They serve as a vital catalyst and place us in good stead towards achieving our shared vision of **Future Forward 2030**.



NKF team (from left):
Assoc Prof Abdul Razakjr Bin Omar, Board Director; Mr Tim Oei, CEO;
Mr Arthur Lang, Chairman; Ms Wong Su-Yen, Board Director;
Assoc Prof Mak Yuen Teen, Chairman of Nomination Committee;
and Prof Ho Yew Kee, Board Director

NKF strives to ensure high standards of corporate governance, accountability and transparency, as well as maintain open communication with our beneficiaries, donors and partners. Having a strong and robust governance framework underpins our commitment to providing quality, affordable and sustainable dialysis for patients. It also ensures our long-term vision for NKF, which focuses on upstream education and prevention of kidney disease to benefit the larger community.

Mr Arthur Lang, Chairman of NKF



Mr Arthur Lang (left), Chairman of NKF, receiving the Charity Governance Award from Mr Edwin Tong, Minister for Culture, Community and Youth & Second Minister for Law on 9 November 2022

Board of directors

NKF Board Meetings Held:
12 November 2021
11 February 2022
17 June 2022



Chairman
Mr Arthur Lang, PBM
Group Chief Financial Officer
Singtel
Meetings attended: 3



Member
Assoc Prof
Abdul Razakjr Bin Omar
Cardiologist, Senior Consultant
& Medical Director
Specialist Care Group
Meetings attended: 2



Member
Mr Ang Hao Yao, CFA
Private Investor
Chairman, Credit Counselling Singapore
Meetings attended: 3



Member
Prof Chan Choong Meng
Deputy Group Education
Director, SingHealth
Campus Educator Director,
Singapore General Hospital
Senior Consultant,
Department of Renal Medicine,
Singapore General Hospital
Meetings attended: 2



Member
Ms Choo Oi Yee
Chief Executive Officer
ADDX
Meetings attended: 2



Member
Prof Ho Yew Kee
Associate Provost
(SkillsFuture and Staff Development)
and Professor of Accounting
Singapore Institute of Technology
Meetings attended: 2



Member
Mr Jerry Koh
Managing Partner
Allen & Gledhill LLP
Meetings attended: 3



Member
Mr Benjamin Lee
Managing Director
Providentia Wealth Advisory Ltd
Meetings attended: 3



Member
Ms Lee Huay Leng
Editor-In-Chief, Chinese Media Partner
SPH Media Ltd
Meetings attended: 3



Member
Mr Bennett Neo
Chief Executive Officer
Saigon Beer-Alcohol-Beverage Corporation
(till 10 Sep 2021)
Meetings attended: N.A.



Member
Mr Ng Boon Yew
BBM, BBM(L)
Executive Chairman
Raffles Campus Group
Meetings attended: 3



Member
Mr Alvin Ong
Chief Information Officer
Nanyang Technological University
Meetings attended: 3



Member
Ms Shirley Wong
Managing Partner
TNF Ventures Pte Ltd
Meetings attended: 3

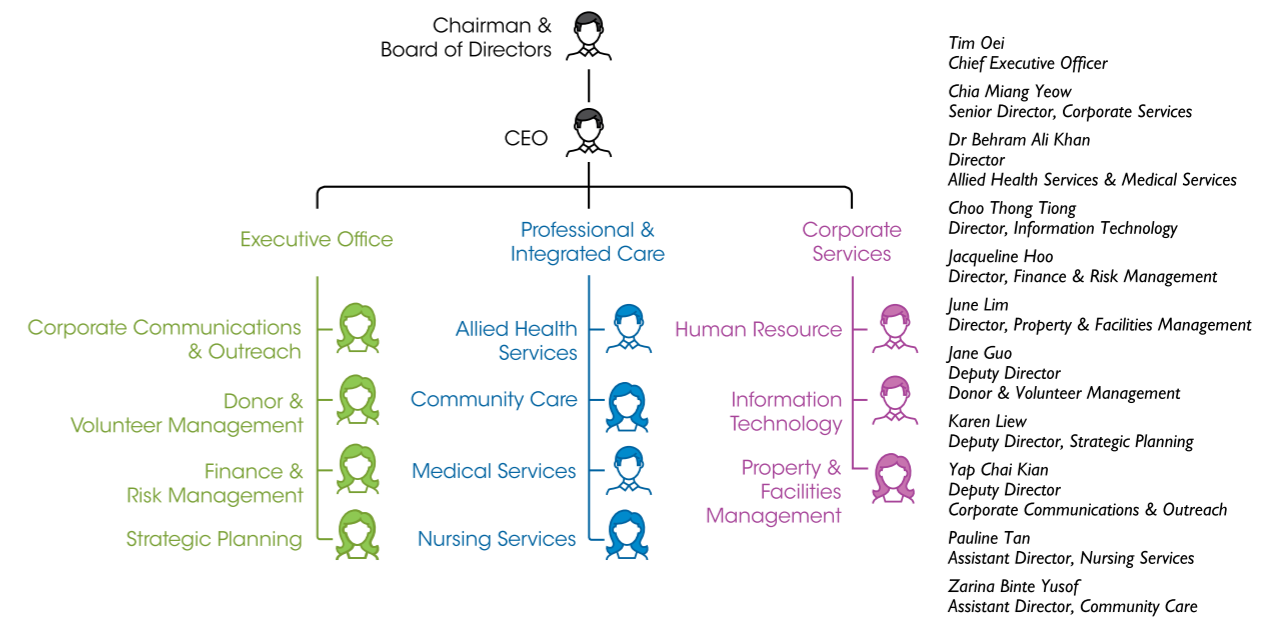


Member
Ms Wong Su-Yen
Founder and Chief Executive Officer
Bronze Phoenix Pte Ltd
Meetings attended: 3



Member
Prof Yaacob Bin Ibrahim
Advisor, Office of the President and
Director, Community Leadership and
Social Innovation Centre (CLASIC)
Singapore Institute of Technology
Meetings attended: 3

Organisation Chart





7 Committees to Cover Key Areas of Management

NKF has 7 committees to assist the Board in covering key areas of management and improving our oversight of management and accountability to stakeholders. All committees have written terms of reference, which are approved by the Board. Minutes of committee meetings are provided to the Board.

Audit & Risk Committee

The Audit & Risk Committee (ARC) assists the Board in ascertaining integrity in financial and non-financial information presented to members, regulators and the general public and a robust risk management system for the Foundation through adequate policies, adoption of strong ethical code of conduct and maintenance of a strong control environment. ARC is also responsible for reviewing the work and independence of both the external and internal auditors.

Chairman
Prof Ho Yew Kee

Members
Dr Daniel Chia
Mr Gregory Tan
Ms Tan Peck Joo
Ms Wan Mei Kit

Committee Meetings Held:
15 July 2021
21 September 2021
26 January 2022
11 April 2022

Finance Committee

The Finance Committee reviews the financial performance of NKF on a monthly basis and reports the results to the Board on a quarterly basis. Its functions include annual review of operating and capital expenditure budget and forecast and recommends, as appropriate, to the Board for approval; review of quarterly financial performance against budget and previous year as well as review and approval of Finance policies and procedures. It also reviews and approves all extra-budgetary expenditure beyond the delegated management authority. In respect of extra-budgetary expenditure that is beyond the delegated authority of the Finance Committee, it makes the appropriate recommendations to the Board for approval. The Committee also oversees the Tender Committee.

Chairman
Mr Ng Boon Yew
BBM, BBM(L)
(till 23 Oct 2021)
Mr Ang Hao Yao
CFA
(from 24 Oct 2021)

Members
Mr Hui Choon Kit
Mr Koh Poh Guan
Ms Susan See Tho
Mr Marc Lo
(from 15 Jan 2022)

Committee Meetings Held:
18 August 2021
28 January 2022
18 May 2022

Fundraising Committee

The Fundraising Committee reviews and ensures that NKF has the appropriate policies and procedures to comply with the Charity Council's Code of Governance in respect of fundraising practices; strategises and spearheads all fundraising programmes and activities on a yearly basis; and helps raise awareness and garner support for financial and other assistance needed by the Foundation.

Chairman
Mr Benjamin Lee
(till 14 Nov 2021)
Ms Choo Oi Yee
(from 15 Nov 2021)

Members
Ms Jennifer Bay
Mr Chris Chiu
Mr Wong Joo Seng

Committee Meetings Held:
27 October 2021
10 February 2022
3 June 2022

Human Resource Committee

The Human Resource Committee (HRC) reviews and advises NKF on HR strategies, policies and key HR programmes supporting NKF's strategic thrusts and priorities.

Chairman
Mr Jerry Koh

Members
Mr Henry Liew
Mr Tan Kim Kwang
Ms Zarina Piperdi

Committee Meetings Held:
29 September 2021
25 April 2022

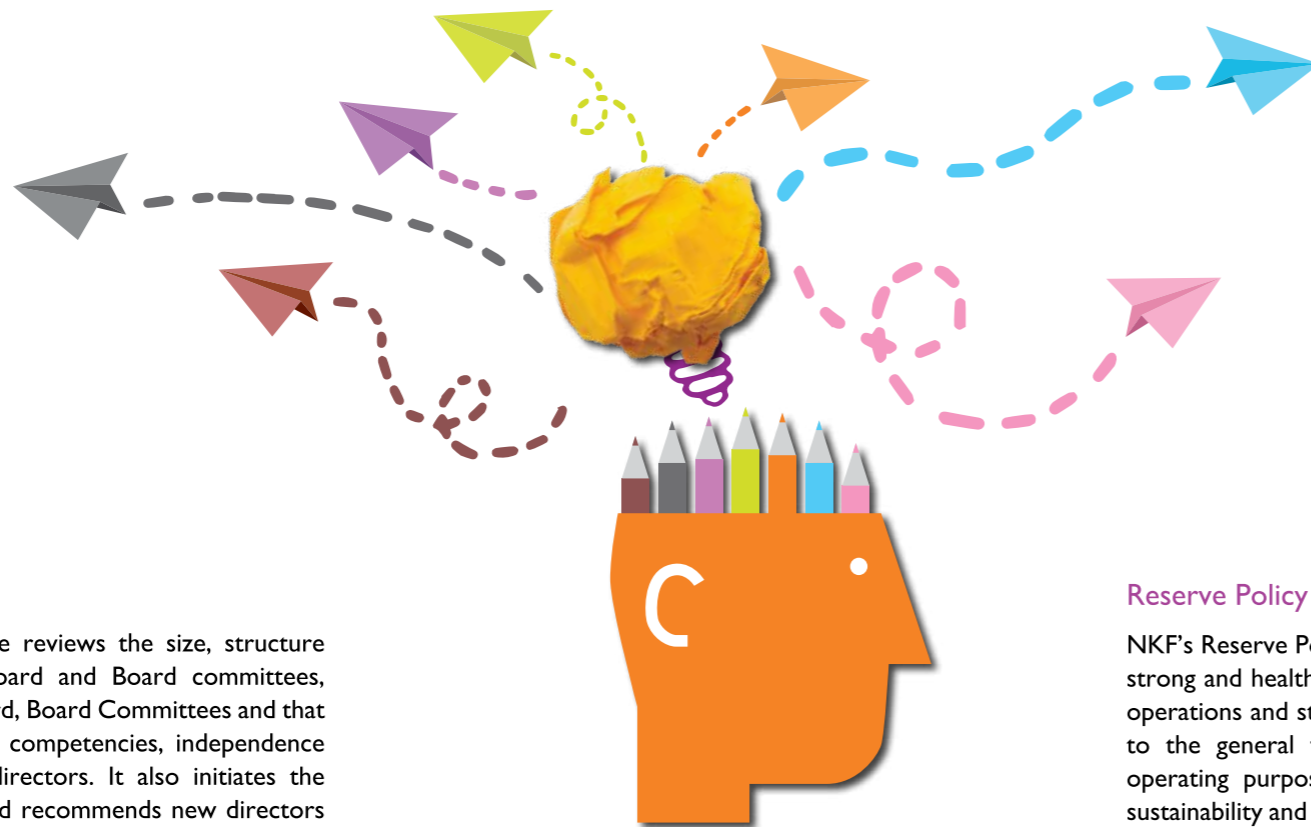
Investment Committee

The Investment Committee recommends, for approval by the Board, (a) the investment policy to meet with the investment objectives of NKF; and (b) suitably qualified external fund managers (FMs) to implement the approved investment policy. Where external FMs are appointed, the Committee also monitors, assesses and reports periodically to the Board the performance of the appointed external FMs, and advises on matters relating to investment administration.

Chairman
Ms Choo Oi Yee
(till 14 Nov 2021)
Mr Ng Boon Yew
BBM, BBM(L)
(from 15 Nov 2021)

Members
Mr Peter Michael Heng
(till 28 Feb 2022)
Ms Laura Kho
(from 15 Jan 2022)
Ms Regina Lim
Mr William Mak
(from 15 Jan 2022)
Ms Tng Kwee Lian
(till 28 Feb 2022)
Ms Zheng Wanshi

Committee Meetings Held:
20 September 2021
17 January 2022
25 April 2022



Nomination Committee

The Nomination Committee reviews the size, structure and composition of the Board and Board committees, succession plans for the Board, Board Committees and that of the CEO, as well as the competencies, independence and time commitment of directors. It also initiates the search for new directors and recommends new directors and existing directors for reappointment to the Board, as well as reviews the proposed appointment of committee members. It also reviews the process and tools for evaluating Board, Committee and individual director performance. The Committee's recommendations are subject to Board approval, and the appointment of members to the Nomination Committee and its terms of reference are approved by the Board.

Chairman

Assoc Prof Mak Yuen Teen

Members

Mr Arthur Lang
Ms Wong Su-Yen

Committee Meetings Held:

21 December 2021
1 March 2022

Technology Committee

The Technology Committee provides expertise and advice on the strategic adoption of technology and major technology-related projects as enablers of the Foundation's purpose; reviews the annual IT budget and to ensure budget compliance; and provides oversight for the identification and management of IT risks, including cybersecurity risks.

Chairman

Mr Alvin Ong

Members

Mr Chai Chin Loon
Assoc Prof Terence Tang
Mr Christopher Yeo

Committee Meetings Held:

17 September 2021
25 January 2022
18 April 2022

Reserve Policy

NKF's Reserve Policy aims to ensure that it maintains strong and healthy fund ratios to support its ongoing operations and strategic initiatives. The policy applies to the general funds that are freely available for operating purposes in order to ensure long term sustainability and excludes endowment, restricted and designated funds.

The target level of reserves is set at least 5 years equivalent of net annual operating expenditure. NKF regularly reviews and manages its reserves to ensure optimal fund structure, taking into consideration its future fund requirements, fund efficiency, projected income and operating cash flow.

Our current year reserves of \$386 million are adequate to fund 2.2 years of projected annual operating expenditure, 0.2 years lower than last year. Annual operating expenditure, for the purpose of the Statement of Reserves, represents the total gross annual expenditure of the Foundation adjusted for inflation and projected capacity increases.

Based on the net annual operating expenditure which takes into consideration projected income from dialysis treatment, NKF's reserve coverage at 5.9 years was 0.2 years lower than last year and above the Board's target of 5 years.

Reserves Policy Statement

in S\$'000	Current Year (as at 30 Jun 2022)	Previous Year (as at 30 Jun 2021)	Increase/ Decrease
General Fund (Reserves)*	385,820	393,552	-2%
Restricted & Designated Funds	34,802	37,699	-8%
Total Funds	420,622	431,251	-2%
No. of Years Reserves Coverage of Annual Operating Expenditure	2.2	2.4	-0.2
No. of Years Reserves Coverage of Net Annual Operating Expenditure	5.9	6.1	-0.2

*Restated to include deferred income to fund future expenditures.

Financial statements

Overview of financial results for the year ended 30 June 2022

	FY 2021/22 S\$'000	FY 2020/21 S\$'000	Variance S\$'000
Charitable Activities			
Income related to Dialysis <i>(Net of patients' subsidies of \$7.9 million for FY 21/22 and \$8.3 million for FY 20/21)</i>	50,805	46,023	4,782
Expenses related to Dialysis	(137,399)	(120,229)	(17,170)
Deficit from Dialysis	(86,594)	(74,206)	(12,388)
MOH Subvention Less Expenses related to Education & Prevention	54,685 (1,336)	50,429 (1,559)	4,256 223
Deficit from Charitable Activities	(33,245)	(25,336)	(7,909)
This is funded by:			
Donations - LifeDrops	13,039	13,145	(106)
Donations - Others	11,402	10,371	1,031
Fundraising Expenses	(3,043)	(2,386)	(657)
Total Donations	21,398	21,130	268
Deficit from Operations after Donations	(11,847)	(4,206)	(7,641)
Government Grants	29,919	22,560	7,359
Rental Income	1,160	1,148	12
Sundry Income	768	374	394
Administrative Expenses	(14,163)	(12,055)	(2,108)
Total Surplus from Operations	5,837	7,821	(1,984)
Investment and Interest Income <i>(Net of fees)</i>	(14,174)	13,410	(27,584)
Total Surplus/Deficit for Financial Year	(8,337)	21,231	(29,568)

The full set of audited financial statements is available at www.nkfs.org to save on printing costs as well as care for the environment.

1. FY2021/22 was a challenging year with rising demand in dialysis services, acute manpower crunch in the community care sector and inflationary cost pressures. Despite the challenges, the Foundation maintained our cost of services to patients and grew our patient intake.
2. Unflinching support from donors and government coupled with prudent spending, the Foundation kept the administrative costs within 9% of operating costs and achieved a marginal operating surplus of \$5.8 million in FY2021/22.
3. Amidst volatile financial market and geopolitical tensions during FY2021/22, the Foundation's investment portfolio valuation recorded a loss of \$14.2 million, largely attributed to credit and yield risks. Although the cumulative investment loss narrowed down to \$4.3 million since inception, the Foundation persisted in active management to navigate market uncertainties.
4. Ending the financial year with a total deficit of \$8.3 million, the Foundation recognises the challenges ahead to be operationally and financially astute for our patients. In times of need like this, the Foundation remains committed to delivering accessible and affordable care to NKF patients.

Annual Expenditure	\$157.4 million	
Dialysis	\$137.4 million	(87%)
Administrative	\$14.2 million	(9%)
Fundraising	\$3.0 million	(2%)
Education & Prevention	\$1.4 million	(1%)
Investment Fees	\$1.4 million	(1%)

Annual Income	\$149.1 million	
MOH Subvention	\$54.7 million	(37%)
Dialysis Income (Insurance claims & fee collection)	\$50.8 million	(35%)
Government Grants	\$29.9 million	(20%)
Donation/Sponsorship	\$24.5 million	(16%)
Rental & Sundry Income	\$1.9 million	(1%)
Investment & Interest Income	\$(12.7) million	(-9%)

Our compassionate donors

We are extremely grateful to all our donors for their unwavering support, care and generosity in giving Life and Hope to our patients.

Below are our donors who have made contributions of \$5,000 and above, monthly donations of \$100 and above or in-kind donations worth \$5,000 and above from 1 July 2021 to 30 June 2022.



Individuals

Abhishek Singh	Chee Ser Chuan	Choo Hui Leng	Fam Kim Meng	Heng Lai Ping Jacqueline	Kwa Hui Kuan Annie	Lim Lee Ping	Ng Ah Teck
Abizer Shabbir Tambawala	Chee Swee Mei Esther	Choo Lay Hwa	Foo Fung Toon Michael	Hew Jervin	Kwan Yuen Ching Natasha	Lim Leong Chuan	Ng Boon Seng
Alex Khoo	Chen Jun Yuan	Choo Oi Yee	Foo Jee Yong Roger	Hew Kuan Cheong	Kwek Ai Ser	Lim Lu Giok Amy	Ng Boone Sing
Alexander Maria Prakasam	Chen Meihua	Chow Choon Yen	Foo Kok Kan	Ho Bock Wee	Kwok Chat Khing	Lim Mei Guei Michelle (Mrs)	Ng Chiew Leng Austin
Allimuthu Kalaivani	Chen Weiya (Mrs)	Chow Joo Ming	Foo Peng Chuan	Ho Boon Cheong	Kwok Cher Luang	Lim Ping Lian	Ng Choon Kiat
Aminah Ismail	Cheng Tee Hiang	Chow Yuen Yong Alvin	Foo Yoke Khan	Ho Chin Tiong Jeffrey	Kwok Ngat Khow	Lim Shan Li (Mrs)	Ng Chuan Her
Andrade Casimiro Jr	Cheong Chin Joo Gerald	Chua Ai Gek Delia	Foong Yim Ping Regina	Ho Ching	Kyryl Ivanov	Lim Soh Wan Nancy	Ng Hoe Kiat Keith
Ang Chai Luan Joyce	Cheong Hock Chew Peter	Chua Bee Kim	Frayna Sarah	Ho Lai Mei	Lai Koon Cheong	Lim Soo Ngoh	Ng Hou Cheng
Ang Chor Meng	Cheong Kok Hom	Chua Bee Suan Angela (Mrs)	Gan Kian Yong Hubert	Ho Meng Hong	Lai Yu Khong	Lim Soon Huat William	Ng Khim Han
Ang Hock Soon	Cheong Theam Hock Peter	Chua Bor Jern	Gan Thong Hoe	Ho Sheng Ming	Lau Hong Choon (Dr)	Lim Tin Ling	Ng Kun Seng
Ang Hun Khoon	Cheung Chuan Woo	Chua Chee Khiang	George Paul (Dr)	Ho Siew Hua Marie	Lau Yang Kim	Lim Ting Feng	Ng Lay Nah (Mrs)
Ang Zhi Hao	Chew Loo Chen Mellissa	Chua Chong Cheng	Goh Ah Lek	Ho Tian Fatt	Law Beng Kok	Lim Tiong Seng	Ng Seh Tiong
Anita Baguio Castillo (Mrs)	Chew Mun Yew	Chua Chor Chuan	Goh Dong Hong	Ho Twee Teng	Law Su Yin	Lim Wee Meng Lawrence	Ng Siok Hoong
Anwar Edward	Chew Siew Lay	Chua Ghim Hoe	Goh Hui Kheng	Ho Wai Kiong	Leau Chee Yung	Lim Yok Ley	Ng Soon Heng
Baey Seng Kah	Chia Gin Sun	Chua Guek Liang Molly	Goh Hwee Shen	Hodson Andrew	Lee Cheah Din	Lin Wai Hung	Ng Soon Kheng
Bajarulla Mohamed Shameem	Chia Hung King	Chua Joseph	Goh Jong Aik	Hong Tuck Meng	Lee Chee Yong Matthew	Lin Zikai Edwin	Ng Soon Lee
Bay Ai Ling Sylvia	Chia Hwee Ming Kelly	Chua Keng Huat	Goh Kah Keat Daniel	Hoshen Md Mamun	Lee Cheng Chong	Liu Chengliang	Ng Steven
Bee Mooi Mooi	Chia Lihan June	Chua Kian Soon	Goh See Hwa	How Yoke Peng	Lee Chin Cheng	Liu Yock Mui Judith	Ng Thiam Seng Kelvin
Bhatia Jyotdeep Singh	Chiew Poh Chue Agnes	Chua Say Kuan William	GOH Siow Tai Alex	Hsu Horng Yeuan John	Lee Hong Ping	Liu Yong Qing	Ng Tya Ah Andrew
Cao Shujuan	Chik Latif Sani	Chua Swee Meng William	Goh Wee Hiong Lawrence	Huang Li	Lee Jia Yun	Lo Szi Wei	Ng Woo Hong
Cera Mark Malony	Chin Hang Ping	Chui Yew Kong	Goh Yun Lin	Huang Meng Ching	Lee Kah Oon	Loh Chin Hua	Ng Zen Zen
Chai Wong Yin Caroline	Chin Shuyan Sharon	Chung Chee Keong	Goyal Sharad	Huang Nating	Lee Kok Boon	Loh Jun Kitt	Ng Zheng Guang Kevin
Chan Hian Siang	Chng Hak Loy	Collado Valerie	Guee Swei Cheng Jacqueline	Huang Shew Jay Jenny	Lee Li-Ming (Mrs)	Loh Wai Meng	Ngan Yap Tang
Chan Mei Lide	Chng Joshua	Dela Cruz Michael Christopher	Gunawan Patrick	Hui Yen Leng	Lee Mary (Mrs)	Loh Yoke Chan Julie	Nganthee Suckchai
Chan Seng Way	Chng Seng Chye	Dilhan Pillay Sandrasegara	Gurav Prasad Pandurang	Hwang Soo Jin	Lee Moo Hiang	Low Hsiao Way	Ngo Chun Yong Andrew
Chan Soo Ling	Choh Choon Jin	Edmund Hooy	Gurusamy Pandikrishnan	Inderjit Singh Gill Ishar Singh Gill	Lee Nguet Kwang	Low Kin Chiang Richard	Nora Champion
Chan Sook Fun Yvonne	Chong Ban Cheong	Ee Boon Kwee	Han Chen Kong Jeffrey	Isaac Naveen	Lee Poh Noy	Low Liong	Noriko Sato (Mrs)
Chan Yok Yue	Chong Kok Yong	Eng Lee Ing	Han Chung Heng	Jaon Bohari	Lee Siew Ming Lawrence	Low Meng Cheng	Oan Chim Seng
Chang Mee Hong	Chong Siew Kam	Er Swee Teck	Han Misuk (Mrs)	Jennifer Bay	Lee Soon Chin	Low Pui Lin	Oh Thay Lee
Cheah Bee Chew	Chong Wee Kee	Eric Sng	Heah Hang Chua	Josephine Chee	Lee Tong	Low Seong Leong	Ong Chee Khoo Joseph PBM
Cheah Phui Kheng Adrienne	Chong Yeh Sun	Estate of Ang Kwang Meng Deceased	Heng Boon Siong	Joyita Poddar	Lee Wen Jervis	Low Wai Sing	Ong Chiew Leong
Chee Keng Lian	Choo Chiang Meng		Heng Chiang Jye	Kampani Yashesh	Lee Yih Chyi	Low Yan Khin Benny	Ong Chin Eng Andrew
				Kang Choon Seng	Leong Heng Kong	Lum Chui Kam	Ong Chuey Geok Diana
				Keh Soh Hua	Leong Hong Yong	Lye Shoon Fong Lawrence	Ong Hian Seng Jerry
				Khoo Eng Lian	Leong Wing Yew Ernest	Mai Ah Ngo	Ong Ing Woei Dennis
				Khoo Whee Leng	Li Gong	Mak Loke Peck	Ong Joo Li
				Khoo Yew Chuan Benjamin	Li Liang	Mao Jinhua	Ong Kim Chee
				Kim Junghoon	Li Zhou	Merabeham Maideen (Mrs)	Ong Kim Hock
				Ko Tuck Chong Willy	Liang Chwee Bock	MiaJei Sufi (Dr)	Ong Kok Hong
				Koh Boon Hock	Liang Eng Hwa	Mohammad Sufian	Ong Swee Hoo
				Koh Choon Yong	Liew Mei Fang Daphne (Mrs)	Mohd Nasrul Abdullah	Ong Tai Yong
				Koh Hui Hong Joycelyn	Lim Ban Lee	Mok Fong Cher	Onn Eng Joo
				Koh Joo Kim	Lim Chee Pin Sam	Mok Kim Chye	Ooi Kooi Tin
				Koh Kian Hong Richard	Lim Chien Hua James	Mok Kwong Weng	Ow Peak Lan
				Koh Kiat Mui	Lim Choo Leng	Muhammad Khairi Darus	Pandit Sanjay Kamalkishore
				Koh Poh Guan	Lim Chwee Kim	Mui Lai Wah Emily	Pang Suh Ju
				Koh Seow Ngang	Lim Geck Kia	Na Boon Chong	Park Suk Hoon
				Koh Wee Nah	Lim Hak Min	Nah Hwee Guan	Parthasarathy Subramanian
				Kok Pei Foong	Lim Hock Chee	Nakhoda Hosein	Pattanasetty Manjunath
				Kong Hung Lau Paul	Lim Hwee Lang	Neo Ah Suan	Ajjappa
				Kong Yeen Hoon	Lim Hwee Leng	Neo Boon Keng	Peck Hwee Peng
				Kuan Ren Qiang Patrick	Lim Keng How Jason	Neo Boon Kham	Peter Tan
				Kudale Yogesh Arvind	Lim Kin Hor Angelia	Neo Gim Siong Bennett	Phang Chin Sern
				Kulkarni Abhijit Ashok	Lim Kong Hiong	Neo Siew Choon Peter	Phang Weng Wan Jay
				Kum Kim Huat Patrick	Lim Lam Seng	Ng Ah Hock	Phoon Kum Yuen

Phoon Kwong Yun Ian
Phua Hong Swee
Phua Kim Guan
Phua Wan Ting
Phyllis Poh
Pier Lim
Pisharath Sreekumar (Dr)
Po Chee Chow Kavin
Poh Cheng Lam Anthony
Poh Liong Pin
Poh Sin Choon
Puar Teck Jin
Quah Ah Choo Susan
Quah Kee Swee
Quek Gim Pew
Quek Koh Kheng Bernard
Raj Sriram
Rajamony Rohith
Ramalingam Dhanavel
Ray Rajagopal R
Roch Cyril Alexander
Sam Lee
Sanjana Singh (Mrs)
Saw Cheng Chye
Saw Lee Leong
Seah Chong Teck
Seah Swee Poh
Seah Wong Chi
Sebastian Nelson Iruthayadoss
See Lay Hoon
Selvarani S
Sandy Prasetyo Khowantono
Seow Eng Teck
Shah Vimali Hitenkumar (Mrs)
Shanmugam Senthil
Shantanu Mukerji
Sheila Christine Anselmi
Shim Shiau Ching
Shiow Sou Ching
Shrestha Smit
Shy Wee Min
Sim Bee Wah Michelle
Sim Churn Bin
Sim Piah Hui
Sim Siew Fung
Sim Soo Yong
Sim Wai Meng
Sim Wei Jie Zen
Sim Willing
Sim Yew Ying
Siti Faridah Khairoman
Sivanesan Sivakumar Martin
Sng Elvin
Sng Meng Yeow
Sng Peng Koon

So Chee Meng Kenneth
Soh Boon Tong
Soh Kim Chua
Soh Kim Chye Dave
Soh Lip Heng
Soniyaamol Joseph
Soo Thiam Boon
Soon Chung Tyan
Soong Yee Shunn
Soundararajan N
Stephen Lee Kim Wah
Su Baolin
Su Guaning (Dr)
Subramanian Kavitha (Mrs)
Sum Sui Cheng
Sun Gin Ping
Surapureddy Venkata
Krishnajanaki Ramayya
Takahashi Raquel (Mrs)
Takeshi Komatsu
Tan Aik Peng
Tan Augustus @ Tan Jiew Sin
Tan Bee Kuan
Tan Bee Leng
Tan Beng Soon
Tan Bo Tan
Tan Boon Hock Hansel
Tan Chew Peng
Tan Chim Hoon
Tan Choon Bee
Tan Choon King
Tan Choong Seng Charles (Dr)
Tan Eng Chye
Tan Gim Chuan Tony
Tan Huan Sing
Tan Hui Sien
Tan Jieh Her
Tan Kah Tin
Tan Kian Huat Albert
Tan Kien Yung
Tan Kim Biau
Tan Kok Hwee Michael
Tan Koon Lai
Tan Lee Keng Jenny
Tan Mui Gek
Tan Ong Huat
Tan Poh Kee
Tan Se Hok David
Tan Seow Leng
Tan Siew Kiang
Tan Siew Leng Tara
Tan Siew Teck Lawrence
Tan Siong Chiow
Tan Song Chiang
Tan Soon Chai

Tan Sze Lee
Tan Tow Kwang Christopher
Tan Tshun Chuang Nigel
Tan Wai See
Tan Wai Yean
Tan Wee Han
Tan Yen Pew
Tan Yeo Chiam Danny
Tan Yew Seng
Tan Yi Zhao
Tan Yong Chiang Joe
Tay Emily
Tay Eng Kng
Tay Jie Ying Richelle
Tay Jin Ying
Tay Kheng Hin
Tay Mong Seng
Tay Tiang Guan
Tay Watt Moi
Tay Woon Teck
Teng Seok Chu
Teo Cher Kian
Teo Choo Yang
Teo Josephine (Mrs)
Teo Pei Ling
Teo Poh Heng
Teo See See
Teo Seng San
Teo Siew Bee Corinne
Teo Tak Sin- Dax
Teo Tat Beng
Teo Tat Meng
Teoh Lay Ghee
Ter Kim Cheu
Than Siang Yean
The Late Mdm Lai Sam Mui
The Late Mr Cheng Song Kim
The Late Mr Puan Wai Meng
The Late Mr Tay Kim Toon
Thong Fook Sang
Tiang Yan Ming
Toh Beng Heng
Toh Cheng Wan
Toh Joo Huat
Toh Kai Seng
Toh Khian Hee Jeffrey
Toh Kim Hock
Toh Siew Gek Joleen
Toh Sze Wei
Toh Wee Beng
Tok Angela
Tok Lai Fa
Tsai Mei Ling
Tuan Di Hui Benjamin
Villanueva Jhune Keithrick

Voo Li Yin Jeanne Marie
Wai Loong Siang
Wang Chun Meng
Wang Jern Hung
Wang Xiqun
Wang Yip Kee
Wang Zhongxian
Way Suk-Yee Catherine
Wayne Goh Huay Hin
Wee Chin Chin Jennifer
Winarno Tjajadi
Windersalam Shanmugasundar
Wong Chew Kong
Wong Hein Jee Lester
Wong Kok On
Wong Soon Chee Annie
Wong Zhung Yu
Woo Chee Seng Raymond
Woon Mui Lang
Wu Mun Keong
Wu Wan (Mrs)
Xu Wenzhe
Yan Sui Wah
Yap Kim Huat Francis
Yap Kwee Lan Lynn
Yap Peng Kang
Yap Soon Heng @ Julian Yap
Yassemin Md Said
Ye Shu
Yee Mei Lin @ Jean Ang
Yeep Kam Mun
Yeo Chai
Yeo Chee Kean
Yeo Jiann Chuen Christopher
Yeo Li Noi Doreen
Yeo Siew Khoo Richard
Yeoh Choon Jin
Yeong Wee Yong Joseph (Dr)
Yew Jun Chong
Yew Lay Leng
Yi Yang
Yogasundaram Krishnan
Yong Kon Yoon Eugene
Yu Li Pin
Zaleha Tamby
Zhang Haiping
Zheng Xiaofeng (Mrs)

"Helping kidney failure patients is a cause that I hold dear to my heart. My late father worked relentlessly to feed our big family. He was diagnosed with kidney failure in his later years. I watched how he suffered in pain due to the lack of available dialysis treatments back then. We are very happy to see San Wang Wu Ti's mission of helping the needy, regardless of race or religion, materialise in the form of dialysis centres to benefit kidney failure patients."



Mr Lee Inn Peng (second from left, with his family), Honorary President of San Wang Wu Ti Religious Society that sponsored the establishment of two NKF dialysis centres

Organisations

42Technology Pte Ltd
A. Lioe & Associates Pte Ltd
Abbott Laboratories (S) Pte Ltd
ADiRECT Singapore Pte Ltd
Advorio Asia Pacific Pte. Ltd. f.k.a Oiltanking Asia Pacific Pte. Ltd.
Alco Sunshade Pte Ltd
Alliance Asia Holdings Pte Ltd
Allswell Trading Pte Ltd
Amitabha Association of Singapore
Amitabha Buddhist Society (Singapore)
Ariston Pte Ltd
Articulture (Pte) Ltd
Astrazeneca Singapore Pte Ltd
BS Shenton Pte Ltd
Bukit Timah Seu Teck Sean Tong
Carway Enterprise
Chin Heng Holdings Pte Ltd
Chong Hood Lim Association
CNY Goodies Singapore Pte Ltd
COMMZ Systems Pte Ltd
Contribute.sg
Corlison Pte Ltd
Diabetes Singapore
Econo Green Pte Ltd
Faith Community Baptist Church
Faith Methodist Church
First Ambulance and Healthcare Pte. Ltd.
Foo Hai Buddhist Cultural & Welfare Association
Fraser and Neave Limited
Fresver Beauty Pte Ltd
Gen.K Jewelry
Geo Coal International Pte Ltd
G-Force Network Pte Ltd
GIC
Gospel Baptist Church

Haneflex (S) Pte Ltd
Haw Par Healthcare Limited
Heliconia Capital Management Pte Ltd
Hilltop Contractor Pte Ltd
Hoe Kee Hardware Pte Ltd
Hup Chung Tentage System Pte Ltd
Jacob General Contractors Pte Ltd
Janus Henderson Investors (Singapore) Limited
J'Kids Amusement Pte Ltd
Johnasia Shipping (S) Pte Ltd
Joo Yong Co Pte Ltd
Kaimay Trading Pte Ltd
Kemia Pte Ltd
Keppel Corporation
Koh Kock Leong Enterprise Pte Ltd
KPMG LLP
Kwan Tzi Zhai Vegetarian Catering
Lam Thiam Ngee & Son Pte Ltd
LeCaine Pte Ltd
Lew Foundation
LG H&H Singapore Private Limited
Loyang Tua Pek Kong
Magicsoft Asia Systems Pte Ltd
Man Fatt Lam Buddhist Temple
Masjid Al-Falah
Masjid Khalid
Masjid Pusara Aman
Mee Toh School
Mitsubishi Electric Asia Pte Ltd
MSD (through The Boys' Brigade Share-a-Gift Campaign)
Nam Leong Co Pte Ltd
Nanking Watch Dealer
National Council of Social Service
NTUC Fairprice Foundation Ltd

OES Construction Pte Ltd
Parwani Law LLC
Patent Engineering Co Pte Ltd
Petersons Wines
Prima Limited
Prime Commodities Trading Pte Ltd
PU TIEN HOLDINGS PTE. LTD.
Razer Health Pte. Ltd.
Regrow Herbal Labs Pte Ltd
Rico-A-Mona Bridal Pte Ltd
Riverhub Pte Ltd
RSM Chio Lim LLP
S C Wong Foundation Trust
Sakyadhita
SATS Staff Association
SG E&C Pte Ltd
Sheng Hong Temple
Shinko Bearings & Beltings Pte Ltd
Singapore Airlines Limited
Singapore Buddhist Welfare Services
Singapore Buddhist Youth Mission
Singapore Bukit Panjang Hokkien Konghuay
Singapore Pools (Private) Limited
Sitigold Pte Ltd
SL Global Pte Ltd
SOG Health Pte Ltd
Sri Siva Durga Temple
SUTL Corporation Pte Ltd
Sweetyet Development Pte Ltd
Tampines Chinese Temple
Tampines West CCC Community Development & Welfare Fund
Tanah Merah Country Club
Tang Gah Beo
TEC Investment Pte Ltd
Temasek Foundation



Our compassionate donors

continued...

Temasek Trust Ltd
 TF IPC Ltd
 The Boston Consulting Group Pte Ltd
 The Hongkong and Shanghai Banking Corporation Limited
 THE HOUR GLASS LIMITED
 Thekchen Choling Singapore Ltd
 Thomson Shin Min Foundation
 Thong Teck Sian Tong Lian Sin Sia
 Tian Kong Buddhist Temple
 TL Whang Foundation Limited
 Toa Payoh Seu Teck Sean Tong
 Tote Board Group
 T-Pride Pte Ltd
 TTJ Design & Engineering Pte Ltd
 Vicplas International Ltd
 Viriya Community Services
 VNJ Logistics Pte Ltd
 Wisely Goba Solutions Pte Ltd
 World of Watches 2 (Orchard) Pte Ltd
 XYSoft Pte Ltd
 Yahya Abdulhussain Lukmanji Saif Charity Trust
 Yio Chu Kang CCC Community Development & Welfare Fund Committee
 Zhongguo Remittance Pte Ltd

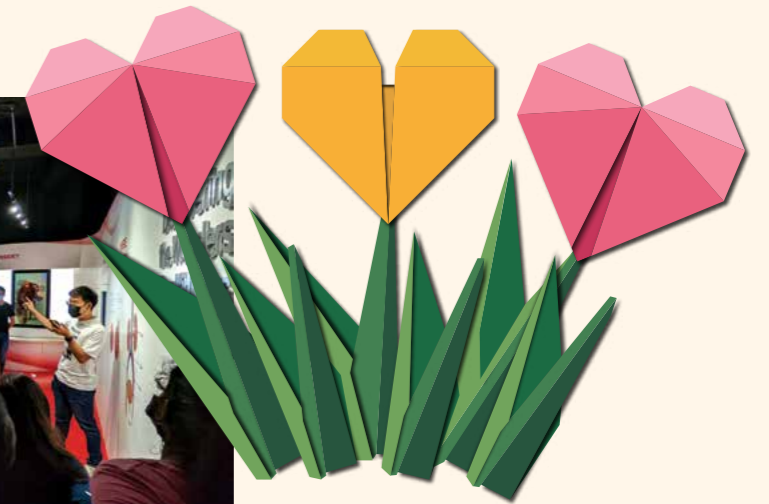
Our dedicated volunteers

Our heartfelt gratitude to all our volunteers and partners for their contributions and efforts in supporting our patients in their rehabilitation journey and advocating kidney health in the community.

Our partners who have volunteered with us from 1 July 2021 to 30 June 2022

Organisations/Religious Groups/Educational Institutions

501 st Legion Singapore Garrison	Insurance and Financial Practitioners Association of Singapore
Anderson Primary School	ITE College West, School of Hospitality ivy!
Anglo-Chinese School (Independent)	Johan Lee & Jerome Mak
Balloon Sculpting Interest Group	Jonathan Mun
Bartley Secondary School	Jurong Spring Helping Hands, CCC
Be Kind SG	Keppel Corporation
Carmen Chia	Knots With Love FHG
Cedar Girls' Secondary School	Love Bonds Pte Ltd
CHIJ St Nicholas Girls' School (Primary)	Melissa Ahmad
CHIJ St Nicholas Girls' School (Secondary) - Project Zenith	Morgan Stanley
Chillin' at 6	Nan Hua Primary School
Cognizant	Nanyang Polytechnic
Cristabel Yeo	Nanyang Technological University CAC
DBS Bank	Emcee Club
District 22 Band	NationOne
Exena Learning Hub Pte. Ltd.	New Creation Church
First Ambulance and Healthcare Pte. Ltd.	Ngee Ann Polytechnic
Good Shepherd Convent Kindergarten	Nikon School
Gospel Baptist Church	NUS High School - St John's Brigade
Harmonica Aficionados Society - The First Harmonica Ensemble	NUS High School of Math and Science
Hey, You Got Mail!	NUS Life Sciences Society - Project DNA
Hwa Chong Institution - Project Evexia	Ourheartstring
Hwa Chong Institution - Project Kidney Keepers	Pastel Nagomi Artists
Hwa Chong Institution - Project Lawelawe	Paya Lebar Methodist Girls' School (Secondary)
Hwa Chong Institution (High School)	PricewaterhouseCoopers LLP
Innovative Pest Pte. Ltd.	



Punggol Secondary School
 Punggol Secondary School - Art Club
 Punggol Secondary School - Interact Club
 Raffles Girls' School (Secondary)
 Raffles Girls' School (Secondary) - Apple Crochet
 Raffles Girls' School (Secondary) - Project Beans
 Raffles Girls' School (Secondary) - Project Expeditus
 Raffles Hospital Pte Ltd
 Raffles Institution - iCARE
 Raffles Institution - Project Beans
 Raffles Institution - Project Zen
 Raffles Institution - Raffles Interact
 Raffles Institution - Red Cross Youth Chapter
 Republic Polytechnic
 Ridge View Residential College, NUS
 Rishii Parthasarathy
 River Valley High School
 Salesforce
 School of the Arts, Singapore - SoTA Nephros Creativity, Activity, Service
 School of the Arts, Singapore (SOTA)
 Singapore Institute of Technology

Singapore Management University - Centre for Social Responsibility
 Singapore Pipe Band, Siglap South CC
 Singapore Polytechnic - Chinese Music and Cultural Club
 Singapore Polytechnic - SP DanceSport Club
 Singapore University of Social Sciences
 Singapore University of Social Sciences - Kidney Beans Talk
 Singapore University of Social Sciences - SUSS Art From The Heart
 Sio Lubis
 Spreading Love, Together
 Teck Whye Secondary School
 Temasek Polytechnic
 The 2nd As Family Band
 The Original Folks
 The TENG Company (TENG Gives Back)
 Visa Worldwide Pte Limited
 Volunteer Guitar Connection
 Winn Yeo Dance Group
 Woodgrove Secondary School
 Xinmin Secondary School

5 Years Individual Long Service

Chai Chin Loon
 Jerry Koh Keen Chuan
 Mary Grace Alejo Perez
 Ng Boon Yew
 Professor Chan Choong Meng
 Rachel Goh Ern Si
 Wong Shirley

10 Years Individual Long Service

Anita Tam Zhi Ning

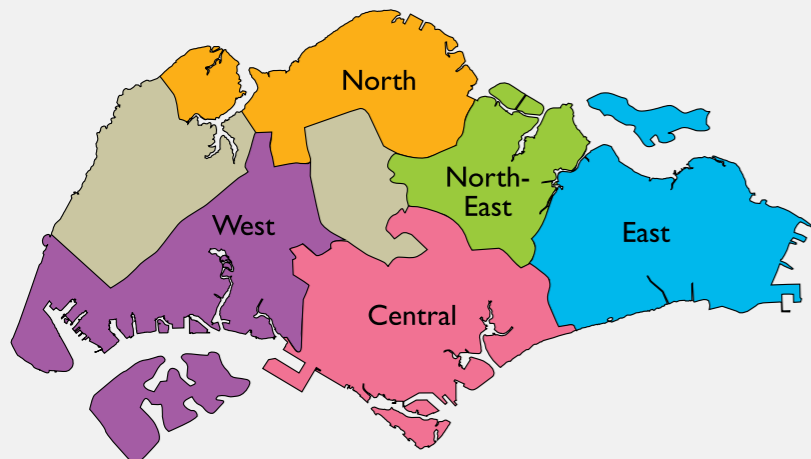
15 Years Individual Long Service

Nirmal Singh Dhillon
 Professor Yap Hui Kim
 Tan Jui Ming
 Winnie Lee Poh Keng



NKF has made every effort to ensure accuracy of the information. We apologise should there be any omissions or errors.

Thanks to our caring sponsors, NKF has been able to set up dialysis centres across Singapore, providing convenience and easy access to treatment and care for kidney failure patients living or working in the heartlands.



North

204 Marsiling

Jo & Gerry Essery – NKF Dialysis Centre
Blk 204, Marsiling Drive, #01-188
Singapore 730204

365 Woodlands

SCAL – NKF Dialysis Centre
(Woodlands Branch)
Blk 365, Woodlands Avenue 5, #01-490
Singapore 730365

761 Woodlands

The Hour Glass – NKF Dialysis Centre
(Admiralty Branch)
Blk 761, Woodlands Avenue 6, #01-108
Singapore 730761

825 Woodlands

Thong Teck Sian Tong Lian Sin Sia –
NKF Dialysis Centre
Blk 825, Woodlands Street 81, #01-30
Singapore 730825

203 Yishun

Toa Payoh Seu Teck Sean Tong –
NKF Dialysis Centre
Blk 203, Yishun Street 21, #01-239
Singapore 760203

639 Yishun

Le Champ – NKF Dialysis Centre
(Yishun Branch)
Blk 639, Yishun Street 61, #01-168
Singapore 760639

840 Yishun

SCAL – NKF Dialysis Centre
(Yishun Branch)
Blk 840, Yishun Street 81, #01-382
Singapore 760840

Yishun Community Hospital

NKF Dialysis Centre Supported by Keppel
2 Yishun Central 2, #03-01
Yishun Community Hospital
Singapore 768024

North-East

565 Ang Mo Kio

Pei Hwa Foundation – NKF Dialysis Centre
Blk 565, Ang Mo Kio Avenue 3, #01-3401
Singapore 560565

633 Ang Mo Kio

Western Digital – NKF Dialysis Centre
Blk 633, Ang Mo Kio Avenue 6, #01-5155
Singapore 560633

114 Hougang

Singapore Buddhist Welfare Services –
NKF Dialysis Centre
Blk 114, Hougang Avenue 1, #01-1298
Singapore 530114

628 Hougang

NKF Hougang – Punggol Dialysis Centre
Blk 628, Hougang Avenue 8, #01-108
Singapore 530628

Punggol Oasis Terraces

NKF Dialysis Centre Supported by
Ngiam Kia Hum & Family
Blk 681, Punggol Drive, #02-02
Singapore 820681

201 Serangoon

Insurance and Financial Practitioners
Association of Singapore (IFPAS) –
NKF Dialysis Centre
Blk 201, Serangoon Central, #01-30
Singapore 550201

East

105 Bedok

NKF Dialysis Centre Supported by
Man Fatt Lam Buddhist Temple
Blk 105, Bedok North Avenue 4, #01-2168
Singapore 460105

27 New Upper Changi

NKF Dialysis Centre Supported by
San Wang Wu Ti Religious Society
Blk 27, New Upper Changi Road, #01-694
Singapore 462027

180 Pasir Ris

Tampines Chinese Temple –
NKF Dialysis Centre
Blk 180, Pasir Ris Street 11, #01-06
Singapore 510180

427 Pasir Ris

NKF Dialysis Centre Supported by
TL Whang Foundation
Blk 427, Pasir Ris Drive 6, #01-35/43
Singapore 510427
(Operational effective 5 Sep 2022)

101 Simei

Kwan Im Thong Hood Cho Temple –
NKF Dialysis Centre (Simei Branch)
Blk 101, Simei Street 1, #01-892
Singapore 520101

271 Tampines

NKF Dialysis Centre Supported by
Wong Sui Ha Edna
Blk 271, Tampines Street 21, #01-99
Singapore 520271

935 Tampines

National Trades Union Congress/
Singapore Pools – NKF Dialysis Centre
Blk 935, Tampines Street 91, #01-333
Singapore 520935

Central

102 Aljunied

Hong Leong – NKF Dialysis Centre
Blk 102, Aljunied Crescent, #01-265
Singapore 380102

43 Bendemeer

Kwan Im Thong Hood Cho Temple –
NKF Dialysis Centre (Kolam Ayer Branch)
Blk 43, Bendemeer Road, #01-1018
Singapore 330043

128 Bukit Merah

The Singapore Buddhist Lodge –
NKF Dialysis Centre
Blk 128, Bukit Merah View, #01-22
Singapore 150128

1 Ghim Moh

Woh Hup – NKF Dialysis Centre
Blk 1, Ghim Moh Road #01-358
Singapore 270001

NKF Centre

Tay Choon Hye – NKF Dialysis Centre
81 Kim Keat Road
Singapore 328836

55 Strathmore

NKF Dialysis Centre Supported by
San Wang Wu Ti Religious Society
Blk 55, Strathmore Avenue, #01-145
Singapore 140055

225 Toa Payoh

NKF Dialysis Centre Supported by
Toa Payoh Seu Teck Sean Tong
Blk 225, Toa Payoh Lorong 8, #01-54
Singapore 310225

Toa Payoh West CC

Seck Hong Choon – NKF Dialysis Centre
200 Toa Payoh Lorong 2, #03-01
Singapore 319642

311 Ubi

Foo Hai – NKF Dialysis Centre
Blk 311, Ubi Avenue 1, #01-383
Singapore 400311

19 Upper Boon Keng

Sakyadhita – NKF Dialysis Centre
Blk 19, Upper Boon Keng Road, #01-1220
Singapore 380019

West

274 Bangkit

NKF Dialysis Centre Supported by
New Creation Church
Blk 274, Bangkit Road, #01-54
Singapore 670274

275 Bangkit

Le Champ – NKF Dialysis Centre
(Bukit Panjang Branch)
Blk 275, Bangkit Road, #01-96
Singapore 670275

103 Bukit Batok

NTUC Income – NKF Dialysis Centre
Blk 103, Bukit Batok Central, #01-237
Singapore 650103

326 Clementi

Lew Foundation – NKF Dialysis Centre
Blk 326, Clementi Avenue 5, #01-175
Singapore 120326

IRC Level 1 & 2

NKF Integrated Renal Centre (IRC)
Supported by The Sirivadhanabhakdi
Foundation
500 Corporation Road, Level 1 & 2
Singapore 649808

240C Jurong East

NKF Dialysis Centre Supported by
Yuhua Grassroots Organisations
Blk 240C, Jurong East Avenue 1, #01-01
Singapore 603240

744 Jurong West

Sheng Hong Temple – NKF Dialysis Centre
Blk 744, Jurong West Street 73, #01-19
Singapore 640744

940 Jurong West

NKF Dialysis Centre Supported by
The Sirivadhanabhakdi Foundation
Blk 940, Jurong West Street 91, #01-441
Singapore 640940

113 Teck Whye

Leong Hwa Chan Si Temple –
NKF Dialysis Centre
Blk 113, Teck Whye Lane, #01-666
Singapore 680113

701 West Coast

The Hour Glass – NKF Dialysis Centre
(West Coast Branch)
Blk 701, West Coast Road, #01-323
Singapore 120701

We strive to take dialysis treatment to its full potential by making home-based peritoneal dialysis and other modalities viable alternatives, empowering patients to take charge of their health by providing holistic care, and supporting clinical research and medtech in collaboration with healthcare partners. While doing all these, we will propel ourselves forward by reducing the progression of kidney failure through kidney health advocacy, driving innovation and improving quality and efficacy in renal care to benefit dialysis patients and the community.



21
22

FORWARD >>

The National Kidney Foundation's Annual Report 2021/22 is a comprehensive summary of our year-round activities and efforts as we continue to meet the challenges ahead together.

81 Kim Keat Road, Singapore 328836

1800-KIDNEYS (5436397)  contact_us@nkfs.org  www.nkfs.org

    | NKFS Singapore